

---

Subject: Error on start up

Posted by [Jerad2142](#) on Tue, 10 Apr 2007 21:25:26 GMT

[View Forum Message](#) <> [Reply to Message](#)

---

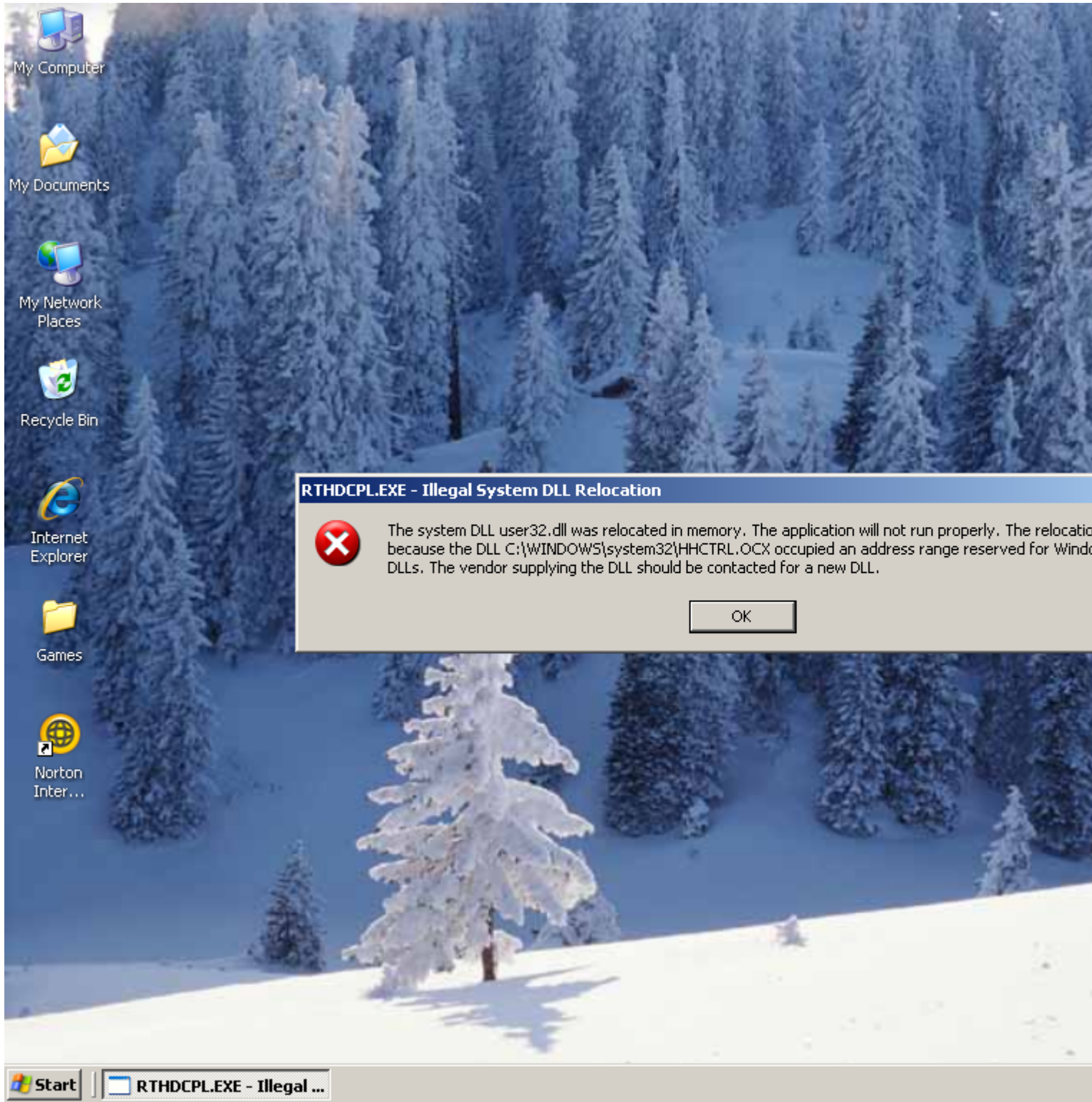
Okay here is the deal every time I start up my computer I get this error message:

Its been happening ever sense I updated my system with Microsoft up date (there was an error and one of the files did not update/patch correctly) so I was thinking that I maybe should just google it and download the file and replace it with the one I currently have. But I decided I would ask you guys first just in case one of you knew that doing this could severe screw up my system or something like that, or that I just have to change a setting.

### File Attachments

---

1) [error.png](#), downloaded 745 times



**RTHDCPL.EXE - Illegal System DLL Relocation**



The system DLL user32.dll was relocated in memory. The application will not run properly. The relocation because the DLL C:\WINDOWS\system32\HHCTRL.OCX occupied an address range reserved for Windows DLLs. The vendor supplying the DLL should be contacted for a new DLL.

OK

Start | RTHDCPL.EXE - Illegal ...