
Subject: I need help in 3ds

Posted by [GrayWolf](#) on Fri, 15 Jun 2007 03:23:50 GMT

[View Forum Message](#) <> [Reply to Message](#)

Is there a way to take a model that has lets say 13 textures on it and turn them all into 1 texture that is mapped in the places they were already on the model.

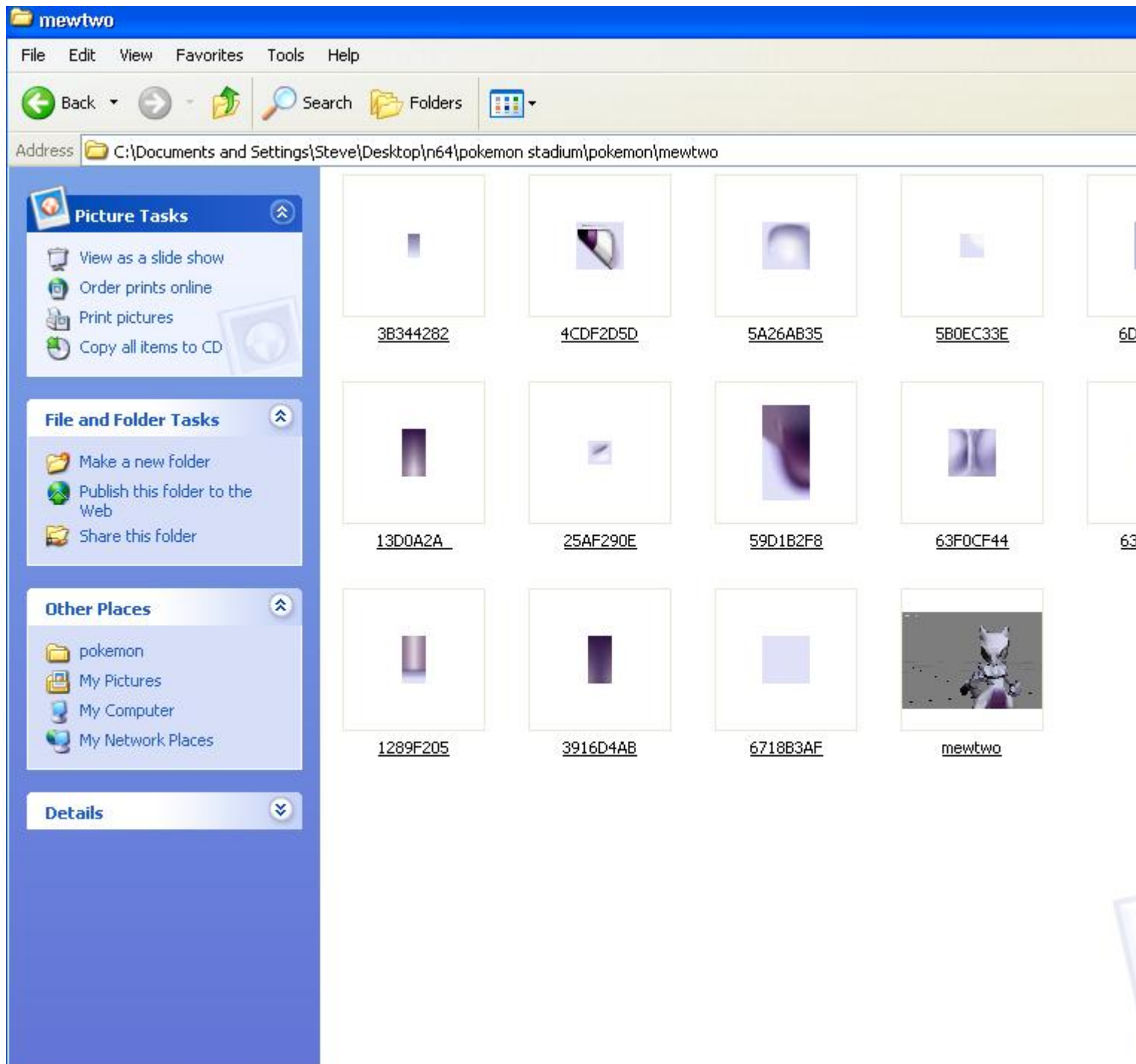
I have a character model but every part has its own texture. Like the hands have there own texture the eyes have their own ...ect

The model is 1 piece and all the textures are in the correct spots.

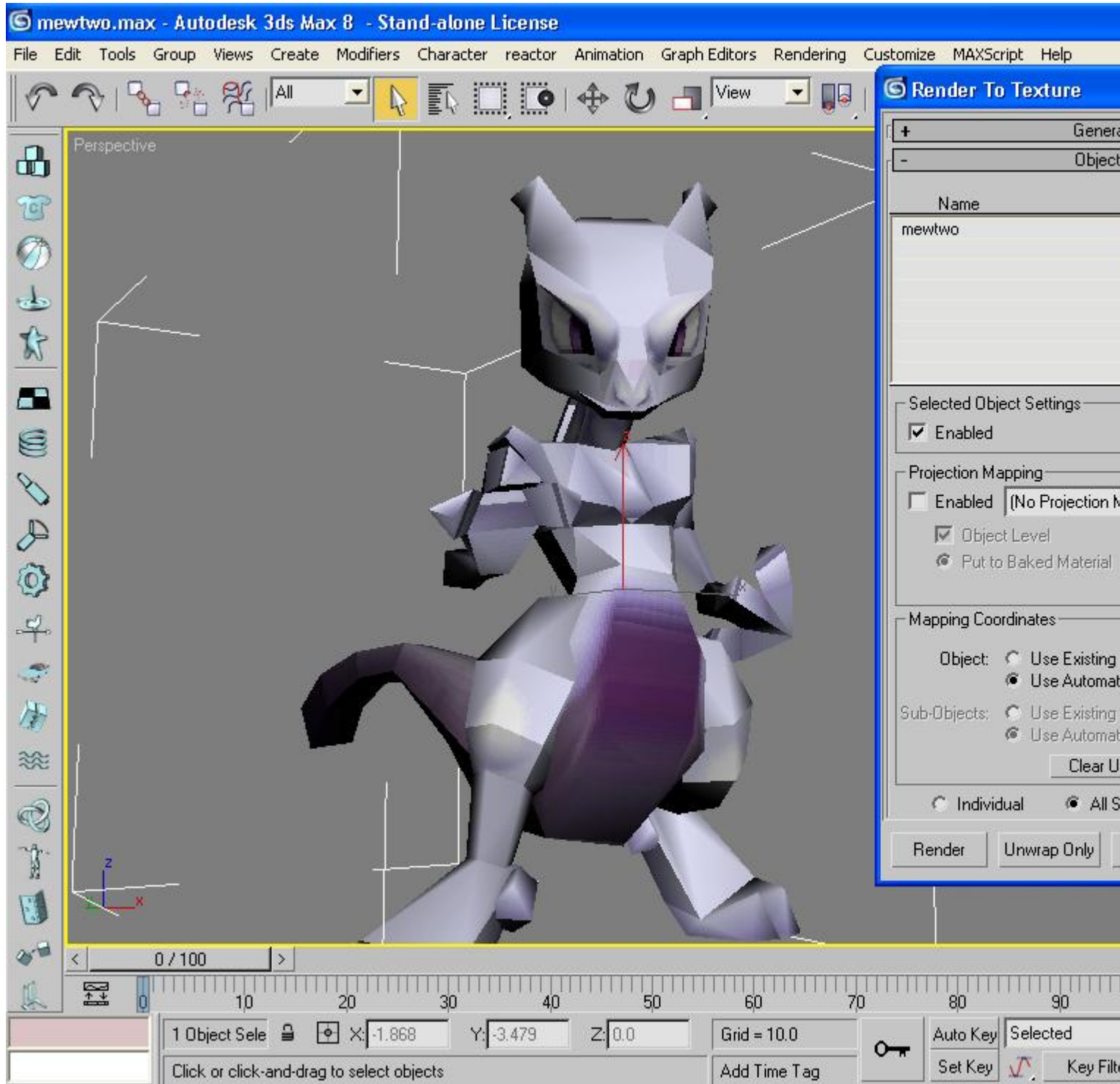
I tryed the render to texture but it only makes a texture of what im looking at... or it textures the whole model but the textures get really blurry. I tryed a bigger size for the out put but still the same, all blurry.

File Attachments

1) [bbfore.JPG](#), downloaded 320 times



2) [before.JPG](#), downloaded 309 times



3) [after.JPG](#), downloaded 305 times

