

---

Subject: Re: vista

Posted by [Jerad2142](#) on Wed, 17 Oct 2007 16:57:55 GMT

[View Forum Message](#) <> [Reply to Message](#)

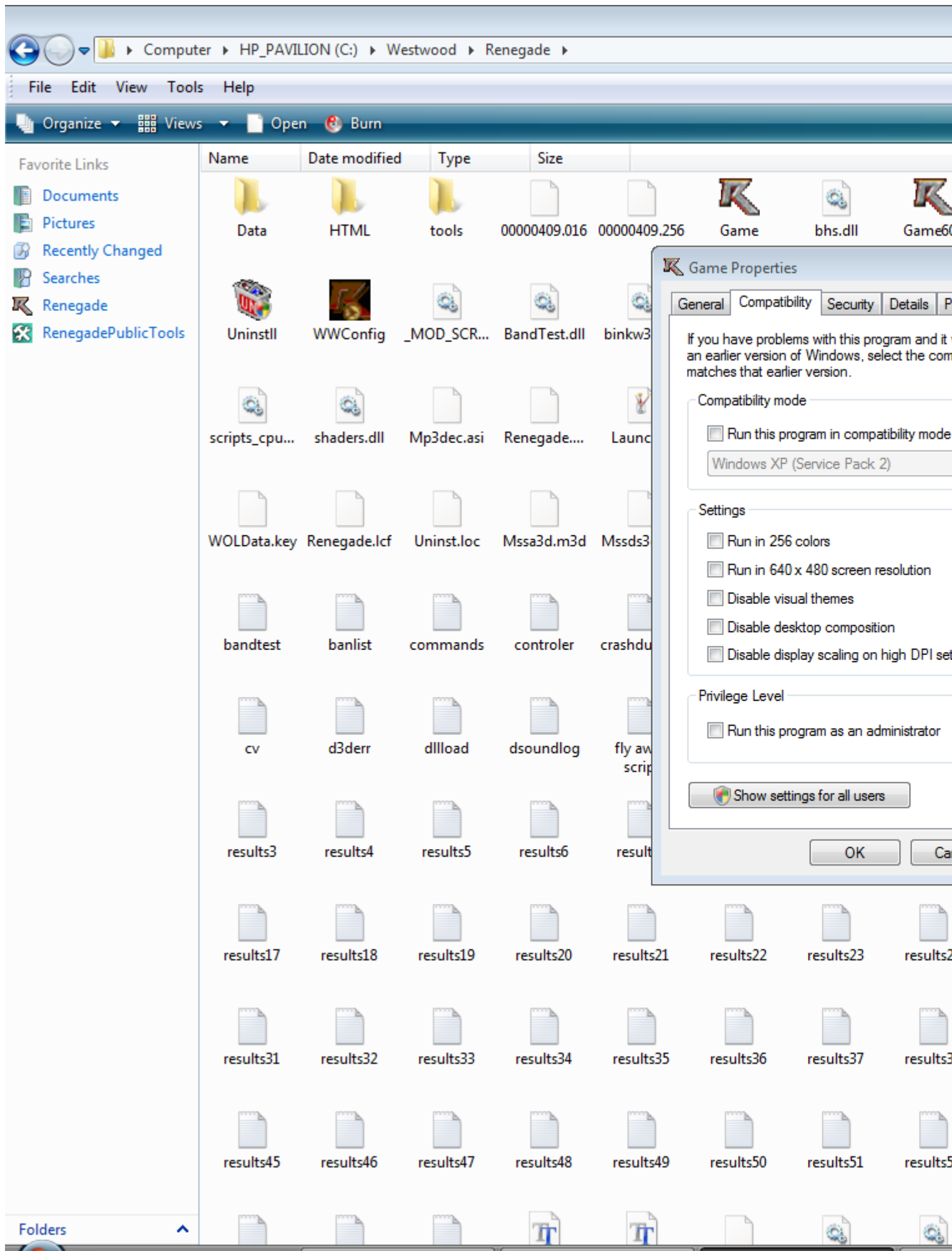
---

I suggest you quit all other programs before you start renegade as some of them will cause it to crash (ALL INCLUDING INTERNET EXPLORER, AND MEDIA PLAYER, JUST DO ALL, THEN TAKE YOUR TIME FIGURING OUT WHICH ONES CAN RUN WITH RENEGADE RUNNING SAFELY).

#### File Attachments

---

1) [renegade compatibility.png](#), downloaded 255 times



Computer > HP\_PAVILION (C:) > Westwood > Renegade

File Edit View Tools Help

Organize Views Open Burn

- Favorite Links
- Documents
  - Pictures
  - Recently Changed
  - Searches
  - Renegade
  - RenegadePublicTools

Name	Date modified	Type	Size
Data	HTML	tools	00000409.016 00000409.256
Uninstall	WWConfig	_MOD_SCR...	BandTest.dll binkw3
scripts_cpu...	shaders.dll	Mp3dec.asi	Renegade.... Launch
WOLData.key	Renegade.lcf	Uninst.loc	Mssa3d.m3d Mssds3
bandtest	banlist	commands	controler crashdu
cv	d3derr	dllload	dsoundlog fly aw scrip
results3	results4	results5	results6 result
results17	results18	results19	results20 results21 results22 results23 results2
results31	results32	results33	results34 results35 results36 results37 results3
results45	results46	results47	results48 results49 results50 results51 results5

**Game Properties**

General Compatibility Security Details P

If you have problems with this program and it is not running properly, you can try running an earlier version of Windows, select the compatibility mode that matches that earlier version.

Compatibility mode

☐ Run this program in compatibility mode

Windows XP (Service Pack 2)

Settings

☐ Run in 256 colors

☐ Run in 640 x 480 screen resolution

☐ Disable visual themes

☐ Disable desktop composition

☐ Disable display scaling on high DPI settings

Privilege Level

☐ Run this program as an administrator

Show settings for all users

OK Cancel