

---

Subject: Getting past computer restrictions  
Posted by [Nodbugger](#) on Fri, 16 Sep 2005 17:07:18 GMT  
[View Forum Message](#) <> [Reply to Message](#)

---

For some reason these computers have had the ability to use a flash drive disabled. I can access just about everything on the account I am using, but I can't find out where this could have been disabled at.

Anyone have a clue where this would be?

---

---

Subject: Re: Getting past computer restrictions  
Posted by [Oblivion165](#) on Fri, 16 Sep 2005 17:12:59 GMT  
[View Forum Message](#) <> [Reply to Message](#)

---

Contol Panel ~ Administative Tools ~ Computer Management ~ [+] Storage ~ [+] Removable Storage ~ [+] Libraries

Right-Click anything that says "USB" ~ Properties ~ Check "Enable Drive"

Repeat for any listed.

Also check the bios, i think on some there is the option to disable them there too.

---

---

Subject: Re: Getting past computer restrictions  
Posted by [Nodbugger](#) on Fri, 16 Sep 2005 17:16:54 GMT  
[View Forum Message](#) <> [Reply to Message](#)

---

It is enabled in there, the computer recognizes it exists, but it does not show up in my computer.

---

---

Subject: Re: Getting past computer restrictions  
Posted by [Oblivion165](#) on Fri, 16 Sep 2005 17:20:38 GMT  
[View Forum Message](#) <> [Reply to Message](#)

---

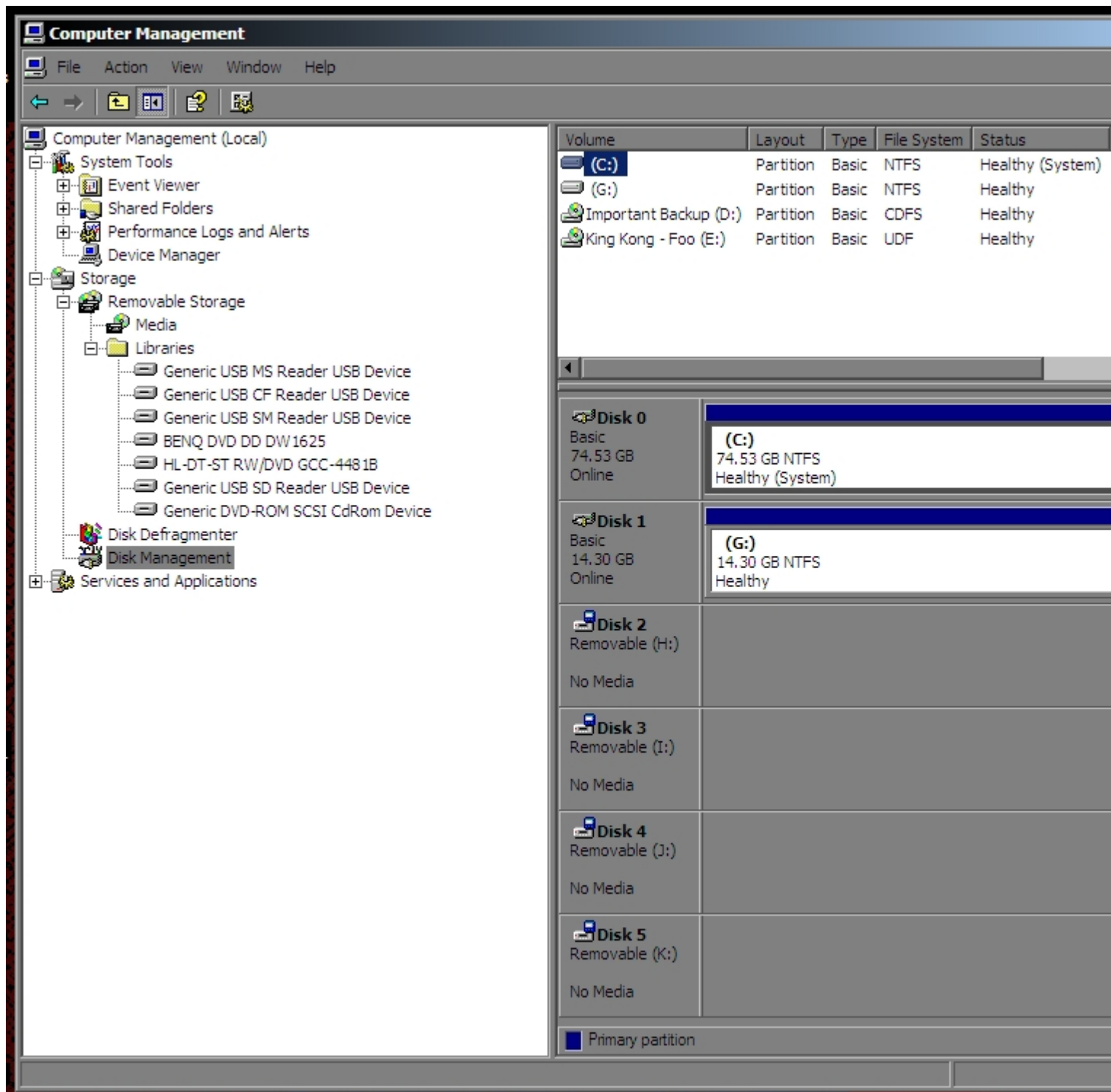
Ok try that, if it shows up in there, manually type in the drive letter ETC

---

#### File Attachments

1) [Clipboard01.jpg](#), downloaded 478 times

---



---

Subject: Re: Getting past computer restrictions  
Posted by [Nodbugger](#) on Fri, 16 Sep 2005 17:23:58 GMT  
[View Forum Message](#) <> [Reply to Message](#)

---

When I go there it says I cannot access the logical disk manager.

---

Subject: Re: Getting past computer restrictions  
Posted by [Oblivion165](#) on Fri, 16 Sep 2005 17:26:07 GMT  
[View Forum Message](#) <> [Reply to Message](#)

---

Welp the only other way i can think of at the moment would be to just start typing in drive letters starting with the one after the last used. Ill post again if i think of anything else.

---