

---

Subject: Problem with CP2

Posted by [x\\_obivlion\\_x](#) on Fri, 24 Feb 2006 04:01:23 GMT

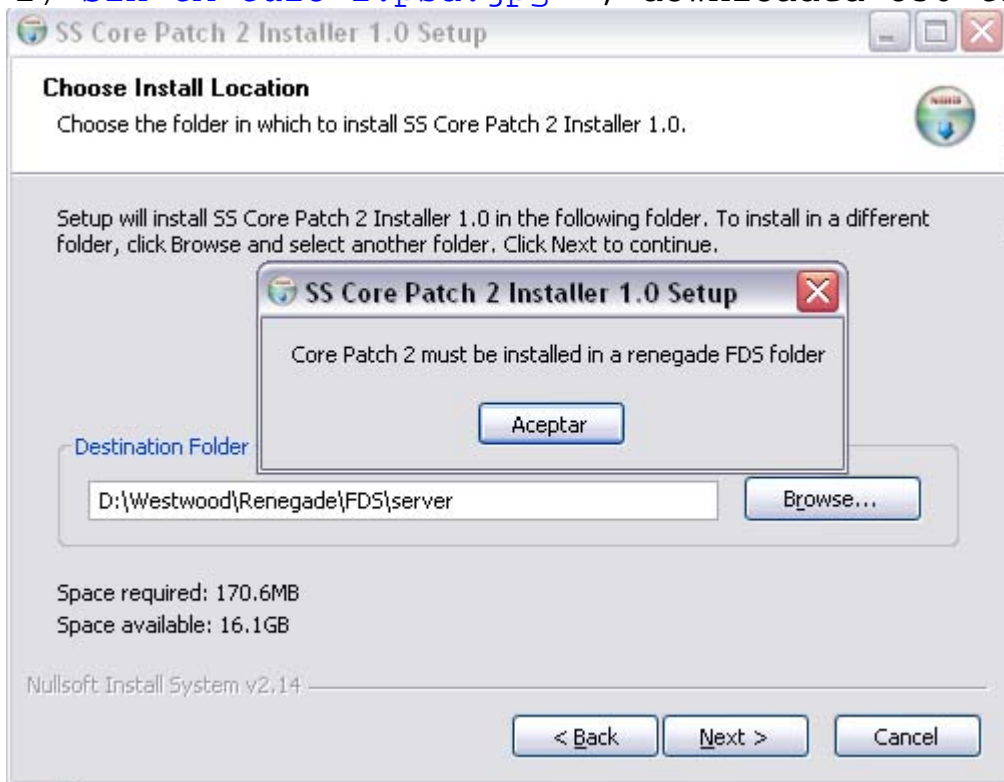
[View Forum Message](#) <> [Reply to Message](#)

---

It says i need to install the cp2 on a renegade FDS folder...the folder im using is the folder where i installed renegade.

### File Attachments

1) [Sin tÃ-tulo-1.psd.jpg](#) , downloaded 830 times



---

Subject: Re: Problem with CP2

Posted by [jonwil](#) on Fri, 24 Feb 2006 04:31:43 GMT

[View Forum Message](#) <> [Reply to Message](#)

---

You downloaded Server Side Core Patch 2.

If you want client CP2, you have to download over RenGuard.

If you really did want Server Side Core Patch 2 for your server, then you need to install it to the right place

---