
Subject: Fleeting Hope

Posted by [Doitle](#) on Fri, 11 Aug 2006 04:22:13 GMT

[View Forum Message](#) <> [Reply to Message](#)

I recently bought parts and built a new computer from scratch.

My System Information

CPU: AMD Athlon X2 4600+

Motherboard: ASUS M2N32-SLI Deluxe

Mem: 2GB Corsair DDR2

HDD: Western Digital 400GB SATA

Video: Dual eVGA 512MB 7900GT KO

Sound: Soundblaster Audigy 4

When it came to installing Windows XP Pro, it started out fine... Made the partition, went along copying files then started saying there were many files it couldn't copy. Something like 20 files it could not copy from the CD. The installation will continue if I keep skipping them, and it gets to the point where you restart and it boots from the HD to finish the install however it goes a little ways here and then just hangs. Perpetually says there are 39 minutes remaining. I've tried everything I can think of, swapping the CD Drives spot on the IDE cable, running Memtest, cleaning the cd (It's a brand new cd too, just opened today). I don't know what to do... It's looking more and more like I just blew 2300\$ because I can't get an OS on it.

If anyone can help me I would be super gracious. This has been like the worst day ever.

Subject: Re: Fleeting Hope

Posted by [Dave Anderson](#) on Fri, 11 Aug 2006 04:41:36 GMT

[View Forum Message](#) <> [Reply to Message](#)

Is you're copy of Windows XP Professional also new? Or is it a copy you have had but just have not opened before?

Subject: Re: Fleeting Hope

Posted by [Doitle](#) on Fri, 11 Aug 2006 04:42:12 GMT

[View Forum Message](#) <> [Reply to Message](#)

Brand new, XP Professional with SP2 I got from newegg. Arrived today.

Subject: Re: Fleeting Hope

Posted by [YSLMuffins](#) on Fri, 11 Aug 2006 04:45:28 GMT

[View Forum Message](#) <> [Reply to Message](#)

Perhaps try installing an earlier OS (or XP home?) and then upgrade to XP pro?

Subject: Re: Fleeting Hope
Posted by [Kamuix](#) on Fri, 11 Aug 2006 04:48:19 GMT
[View Forum Message](#) <> [Reply to Message](#)

Are you using an older CDrom? If you are try different ones, it works for me alot, I've had that happen many times before lol

Subject: Re: Fleeting Hope
Posted by [Doitle](#) on Fri, 11 Aug 2006 04:49:35 GMT
[View Forum Message](#) <> [Reply to Message](#)

well the new one I bought from Newegg doesn't work at all. The motherboard just wont recognize it no matter where its at on the IDE chain. I'm using a Relatively new DVD Burner to install right now, the one thats not working. Past that... I have some super old drives, 5-10 years old. Would they work maybe?

Subject: Re: Fleeting Hope
Posted by [Kamuix](#) on Fri, 11 Aug 2006 04:59:23 GMT
[View Forum Message](#) <> [Reply to Message](#)

They might, its worth a try

Subject: Re: Fleeting Hope
Posted by [Dave Anderson](#) on Fri, 11 Aug 2006 05:21:30 GMT
[View Forum Message](#) <> [Reply to Message](#)

I know that on my parents computer, their DVD drive refuses to read anything BUT a DVD.. Maybe you should be using a standard CD-R drive to install Windows XP Pro.

Subject: Re: Fleeting Hope
Posted by [Doitle](#) on Fri, 11 Aug 2006 05:26:57 GMT
[View Forum Message](#) <> [Reply to Message](#)

Woot Woot! IT WAS THE DRIVE! I completely removed the old DVD-RW and then for some reason the DVD-RW I bought on newegg which was previously undetectable was detected, and it installed! I'll be posting from a brand new hotrod of a PC soon! w00t w00t ah ha ha awesome sauce!!!

Subject: Re: Fleeting Hope
Posted by [Kamuix](#) on Fri, 11 Aug 2006 05:43:50 GMT

[View Forum Message](#) <> [Reply to Message](#)

Nice to hear you got it installed

A DVDRom that does not read regular Cd's , maybe its an old one lol.

Subject: Re: Fleeting Hope

Posted by [z310](#) on Fri, 11 Aug 2006 06:01:24 GMT

[View Forum Message](#) <> [Reply to Message](#)

Kamuix wrote on Fri, 11 August 2006 01:43A DVDRom that does not read regular Cd's , maybe its an old one lol.

Most likely it's a problem with the drive. I currently can't read CDs with my DVD burner. I guess a lense fucked up.

Subject: Re: Fleeting Hope

Posted by [Doitle](#) on Fri, 11 Aug 2006 06:33:40 GMT

[View Forum Message](#) <> [Reply to Message](#)

Yay! I'm currently posting from the new computer, which has NOTHING on it! I haven't gotten to test out the Video cards because there are no programs on this lol.

Subject: Re: Fleeting Hope

Posted by [JeepRubi](#) on Fri, 11 Aug 2006 11:44:02 GMT

[View Forum Message](#) <> [Reply to Message](#)

Pinball!

Subject: Re: Fleeting Hope

Posted by [MexPirate](#) on Fri, 11 Aug 2006 13:27:52 GMT

[View Forum Message](#) <> [Reply to Message](#)

Jeep Rubi wrote on Fri, 11 August 2006 06:44Pinball!

ftw, my friend had a score of about 8mil - can you beat that?

lol

Subject: Re: Fleeting Hope

Posted by [Dave Anderson](#) on Fri, 11 Aug 2006 14:20:49 GMT

[View Forum Message](#) <> [Reply to Message](#)

Doitle, I am glad I was of some help.

Quote:ftw, my friend had a score of about 8mil - can you beat that?

lol

I got to 5,500,000 plus a bit more. I do believe once I got to a little over 10 million, but I am not sure if I am remembering correctly.

Subject: Re: Fleeting Hope

Posted by [cheesesoda](#) on Fri, 11 Aug 2006 14:33:20 GMT

[View Forum Message](#) <> [Reply to Message](#)

Doitle wrote on Fri, 11 August 2006 01:26Woot Woot! IT WAS THE DRIVE! I completely removed the old DVD-RW and then for some reason the DVD-RW I bought on newegg which was previously undetectable was detected, and it installed! I'll be posting from a brand new hotrod of a PC soon! w00t w00t ah ha ha awesome sauce!!!

Yeah, I had that same problem with when I was trying to install XP on my old machine. It kept corrupting the files, so the only way that I could install XP was to install Windows 98 SE, install my external CD-RW drive and install from there. That was a pain in the ass.

Glad you got it to work.

Edit: Dave... I don't necessarily think that you were the one who helped him in this issue...

Subject: Re: Fleeting Hope

Posted by [Dave Anderson](#) on Fri, 11 Aug 2006 18:06:10 GMT

[View Forum Message](#) <> [Reply to Message](#)

I know I did not give him a direct answer. I did, however, mention a similar scenario.

Dave Anderson wrote:I know that on my parents computer, their DVD drive refuses to read anything BUT a DVD.. Maybe you should be using a standard CD-R drive to install Windows XP Pro.

Subject: Re: Fleeting Hope

Posted by [Doitle](#) on Fri, 11 Aug 2006 18:11:33 GMT

[View Forum Message](#) <> [Reply to Message](#)

Hey not only for fixing it but also for being there. I was pretty upset last night. I just needed to tell people about it and get responses. So everybody helped in some way.

I have gotten some things installed on here since, it's mad fast. CS:S with every setting cranked and AA and Anisotropic all the way up I get 150fps. The only problem, is Fraps. I guess fraps has trouble getting the frames from both video cards and when I turn it on it drops to like 1 fps, then if I don't turn it off the game crashes.

Subject: Re: Fleeting Hope
Posted by [danpaul88](#) on Fri, 11 Aug 2006 18:26:07 GMT
[View Forum Message](#) <> [Reply to Message](#)

Fraps does the same for renegade with AA turned on, I think it's an issue with fraps and AA, not with the video cards themselves. When I used the Dx9 patch on Ren and turned on AA fraps dropped to 1 fps then as well.

Subject: Re: Fleeting Hope
Posted by [mrpirate](#) on Fri, 11 Aug 2006 18:34:54 GMT
[View Forum Message](#) <> [Reply to Message](#)

Probably something to do with SLI because I've never had any problems with fraps and AA. For the record I had a very similar problem with installing Windows XP (as I mentioned in a post some weeks ago) and I was about to quote myself here but I guess I got beat to it. Anyway, congrats on getting your new computer working, it's always a struggle.

Subject: Re: Fleeting Hope
Posted by [Dave Mason](#) on Fri, 11 Aug 2006 18:36:57 GMT
[View Forum Message](#) <> [Reply to Message](#)

[PAPirate wrote on Fri, 11 August 2006 14:27]Jeep Rubi wrote on Fri, 11 August 2006 06:44Pinball!

ftw, my friend had a score of about 8mil - can you beat that?

lol

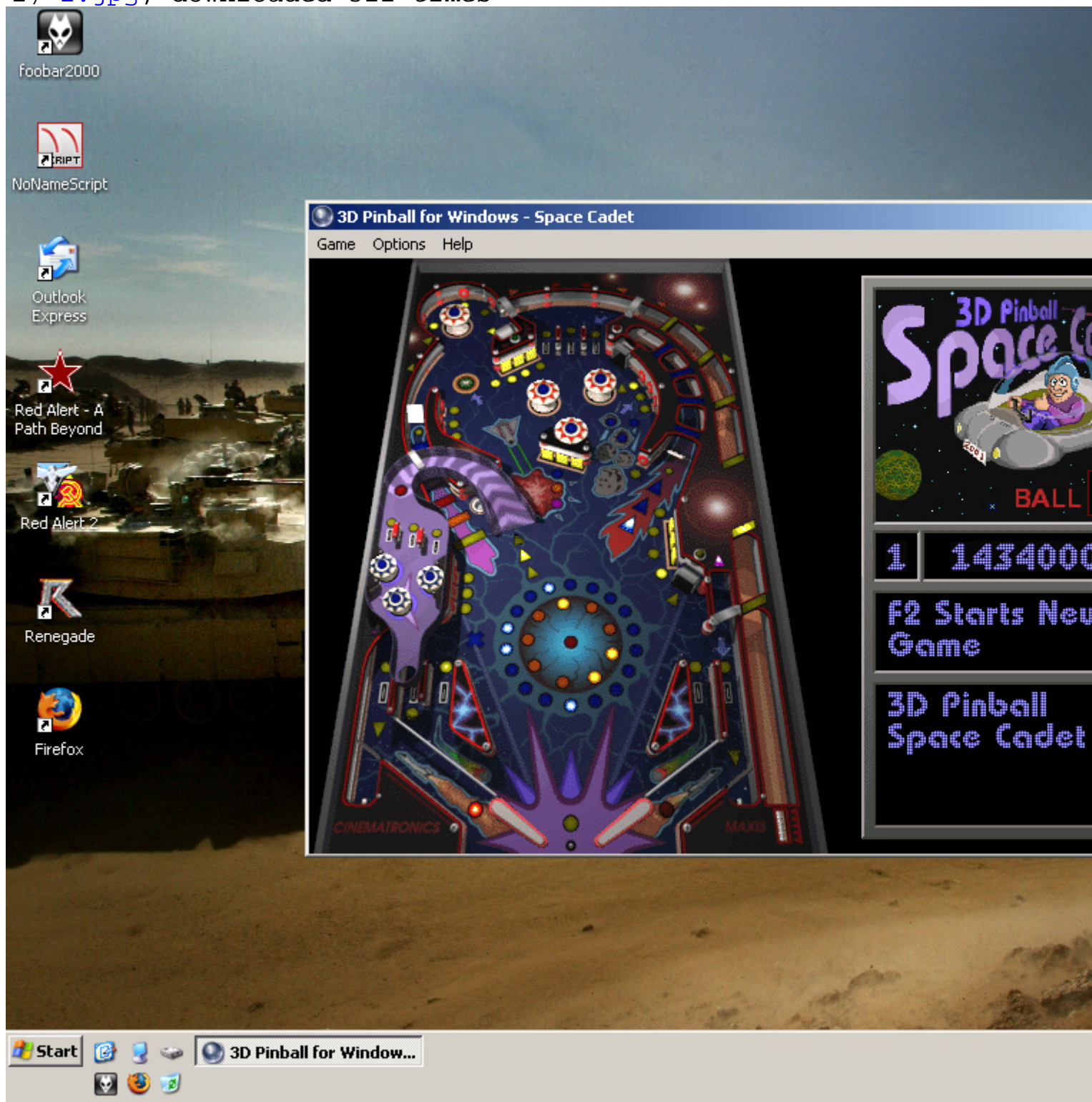
8,750,000 roughly .

Subject: Re: Fleeting Hope
Posted by [z310](#) on Fri, 11 Aug 2006 19:31:24 GMT
[View Forum Message](#) <> [Reply to Message](#)

What's that? I win?

File Attachments

1) [1.jpg](#), downloaded 321 times



Subject: Re: Fleeting Hope
Posted by [danpaul88](#) on Fri, 11 Aug 2006 20:46:00 GMT
[View Forum Message](#) <> [Reply to Message](#)

mrpirate wrote on Fri, 11 August 2006 19:34 Probably something to do with SLI because I've never had any problems with fraps and AA.

My card is a Radeon 9800se, no SLI here... but your right its most likely something to do with a specific combination of hardware & settings, and not a global problem

Subject: Re: Fleeting Hope
Posted by [Dave Mason](#) on Fri, 11 Aug 2006 21:36:42 GMT
[View Forum Message](#) <> [Reply to Message](#)

z310 wrote on Fri, 11 August 2006 20:31 What's that? I win?

Lol, yes, you win. Anyway, let's not derail this topic.

Subject: Re: Fleeting Hope
Posted by [JeepRubi](#) on Fri, 11 Aug 2006 21:51:10 GMT
[View Forum Message](#) <> [Reply to Message](#)

I probably could beat you at pinball(not) but i dont want to sit playing pinball for the rest of my life.
