

---

Subject: How do I set these settings?

Posted by [Carrierll](#) on Mon, 12 Mar 2007 18:56:18 GMT

[View Forum Message](#) <> [Reply to Message](#)

---

Topic.

How do I set the two lines in the DxDiag window that I've boxed in red?

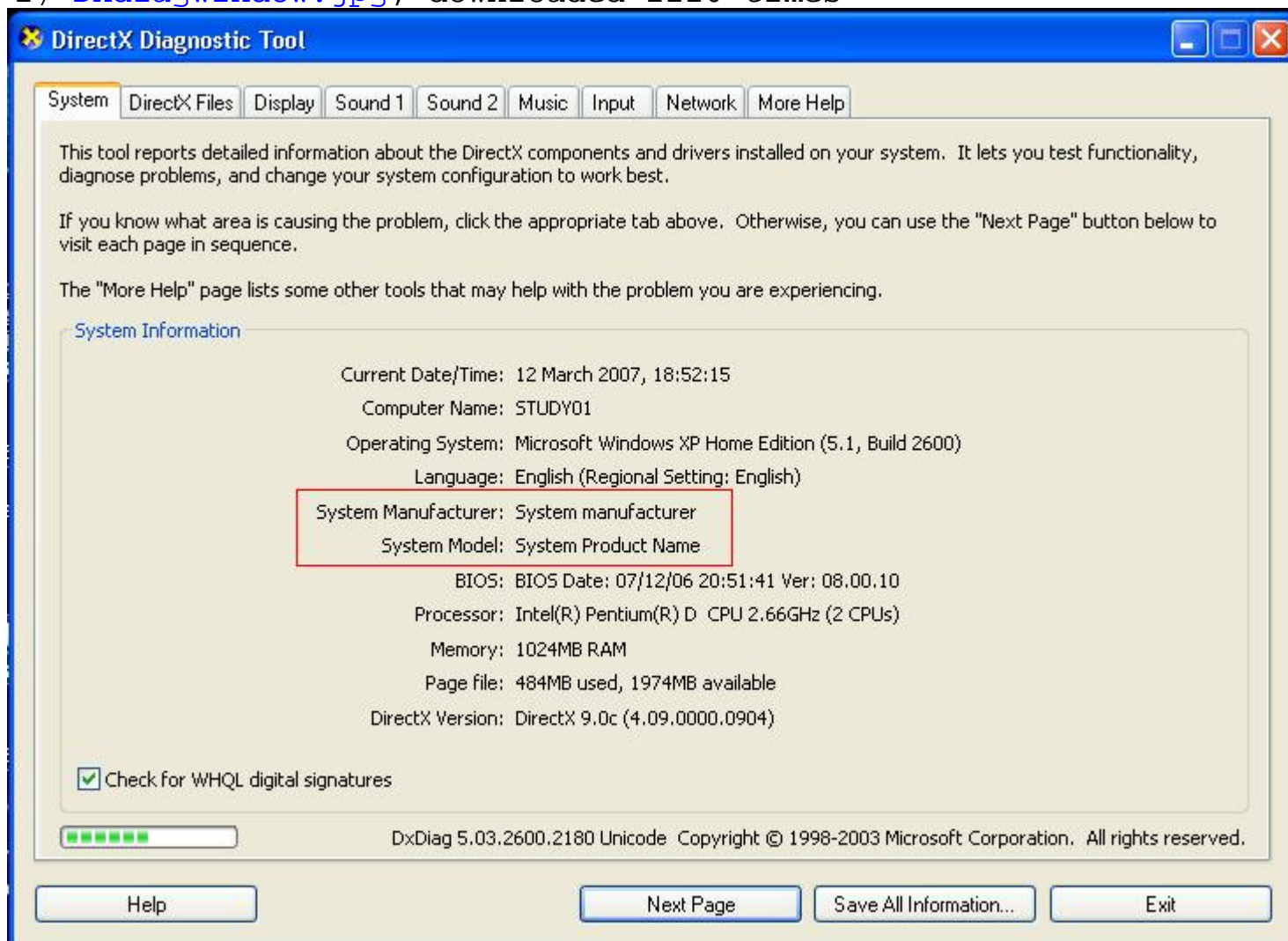
Anyone know?

Carrier

---

## File Attachments

1) [Dxdiagwindow.jpg](#), downloaded 1126 times



---

Subject: Re: How do I set these settings?

Posted by [sharra](#) on Tue, 13 Mar 2007 03:16:49 GMT

[View Forum Message](#) <> [Reply to Message](#)

---

i dont know if you can i will ask my freiend if you want

---

---

Subject: Re: How do I set these settings?  
Posted by [Carrierll](#) on Tue, 13 Mar 2007 18:06:38 GMT  
[View Forum Message](#) <> [Reply to Message](#)

---

Anyone at all? (Please do ask around)

---

---

Subject: Re: How do I set these settings?  
Posted by [Goztow](#) on Tue, 13 Mar 2007 18:51:27 GMT  
[View Forum Message](#) <> [Reply to Message](#)

---

The real question is: 'why?'

---

---

Subject: Re: How do I set these settings?  
Posted by [icedog90](#) on Tue, 13 Mar 2007 21:43:49 GMT  
[View Forum Message](#) <> [Reply to Message](#)

---

Maybe he wants to send the logs to something, and he needs accurate information?

---

---

Subject: Re: How do I set these settings?  
Posted by [Dave Anderson](#) on Wed, 14 Mar 2007 01:30:12 GMT  
[View Forum Message](#) <> [Reply to Message](#)

---

Those values will only be set when a manufacturer such as Dell or some other company sets them at installation time of Windows. (I'm not quite sure how they do it).

Otherwise they will generally say what yours says, or they will say "To Be Filled By O.E.M.".

---

---

Subject: Re: How do I set these settings?  
Posted by [icedog90](#) on Wed, 14 Mar 2007 04:42:13 GMT  
[View Forum Message](#) <> [Reply to Message](#)

---

I don't think so. I think it goes by the chipset of your motherboard.

---

### File Attachments

1) [dxdiag.png](#), downloaded 766 times

---

System Manufacturer: NVIDIA  
System Model: AWRDACPI

---

Subject: Re: How do I set these settings?  
Posted by [Dave Anderson](#) on Wed, 14 Mar 2007 05:26:57 GMT  
[View Forum Message](#) <> [Reply to Message](#)

Interesting. I guess there are duplicate sets of those settings meaning different things.

---

Subject: Re: How do I set these settings?  
Posted by [Creed3020](#) on Wed, 14 Mar 2007 12:51:42 GMT  
[View Forum Message](#) <> [Reply to Message](#)

Those settings go by the PC's manufacturer. To set them I found imagine it would mean finding some keys in your registry. That is only a guess on my part though.

---

#### File Attachments

1) [dxdiag.jpg](#), downloaded 543 times

System Manufacturer: Hewlett-Packard  
System Model: HP Compaq dc7600 Convertible Minitower

---

Subject: Re: How do I set these settings?  
Posted by [Carrierll](#) on Wed, 14 Mar 2007 19:12:44 GMT  
[View Forum Message](#) <> [Reply to Message](#)

Goztow wrote on Tue, 13 March 2007 18:51The real question is: 'why?'

Beuase I want to. (I built this myself, hence the lack of it being filled in...)

I just wanted to put it there for a sense of accomplishment.  
Thanks for the advice so far.

---

Subject: Re: How do I set these settings?  
Posted by [Hex](#) on Wed, 14 Mar 2007 22:00:36 GMT  
[View Forum Message](#) <> [Reply to Message](#)

The information is read from your motherboards DMI, which is filled in by the manufacturer of the board, afaik you can't change it

---

Subject: Re: How do I set these settings?  
Posted by [icedog90](#) on Thu, 15 Mar 2007 06:09:36 GMT  
[View Forum Message](#) <> [Reply to Message](#)

---

Hex is correct. I'm not sure why yours didn't have any information though.

---

---

Subject: Re: How do I set these settings?  
Posted by [CarrierII](#) on Thu, 15 Mar 2007 08:14:07 GMT  
[View Forum Message](#) <> [Reply to Message](#)

---

Hmm, my board is an Asus P5LD2 with Intel 945 chipset.

---

---

Subject: Re: How do I set these settings?  
Posted by [light](#) on Thu, 15 Mar 2007 09:26:04 GMT  
[View Forum Message](#) <> [Reply to Message](#)

---

My Asus mobo as N/a set for both. (A7N266-VM)

---

---

Subject: Re: How do I set these settings?  
Posted by [danpaul88](#) on Thu, 15 Mar 2007 11:53:17 GMT  
[View Forum Message](#) <> [Reply to Message](#)

---

My Asus M2N-SLI has the same as shown in the screenshot, I guess it depends what settings they feel like putting on each one

---

---

Subject: Re: How do I set these settings?  
Posted by [Creed3020](#) on Thu, 15 Mar 2007 12:58:38 GMT  
[View Forum Message](#) <> [Reply to Message](#)

---

The ss I posted is my PC at work. My custom built rig at home might be the same as yours, blank. I will check when I get home.

---

---

Subject: Re: How do I set these settings?  
Posted by [CarrierII](#) on Fri, 16 Mar 2007 18:06:42 GMT  
[View Forum Message](#) <> [Reply to Message](#)

---

Polite reminder of a bump.

---

---

Subject: Re: How do I set these settings?  
Posted by [Jonty](#) on Sun, 18 Mar 2007 14:37:16 GMT  
[View Forum Message](#) <> [Reply to Message](#)

---

I have a custom PC with an MSI M'board (D:) and in DX10 the boxes say "MICRO-STAR INTERNATIONAL CO., LTD" and "MS-7142"

---

---

Subject: Re: How do I set these settings?  
Posted by [Jerad2142](#) on Sat, 24 Mar 2007 06:29:44 GMT  
[View Forum Message](#) <> [Reply to Message](#)

---

You do realize that it isn't done loading yet.

---

---

Subject: Re: How do I set these settings?  
Posted by [Carrierll](#) on Sat, 24 Mar 2007 10:43:44 GMT  
[View Forum Message](#) <> [Reply to Message](#)

---

Erm, even if it finishes, it doesn't display that information, I did check that..

---

---

Subject: Re: How do I set these settings?  
Posted by [Dave Anderson](#) on Sat, 24 Mar 2007 14:44:16 GMT  
[View Forum Message](#) <> [Reply to Message](#)

---

I wouldn't worry about it. Its nothing important really.

---

---

Subject: Re: How do I set these settings?  
Posted by [EA-DamageEverything](#) on Thu, 31 May 2007 00:53:56 GMT  
[View Forum Message](#) <> [Reply to Message](#)

---

It could be simple= For gathering Information about the inside secrets of your computer, download Everest Ultimate here  
<http://www.lavalys.com>

If you only want to enter some OEM info which will be shown in the "System properties" tab, copy the oeminfo.ini + oemlogo.bmp into %systemroot%/%windir%/system32 (Windows2000 and higher).

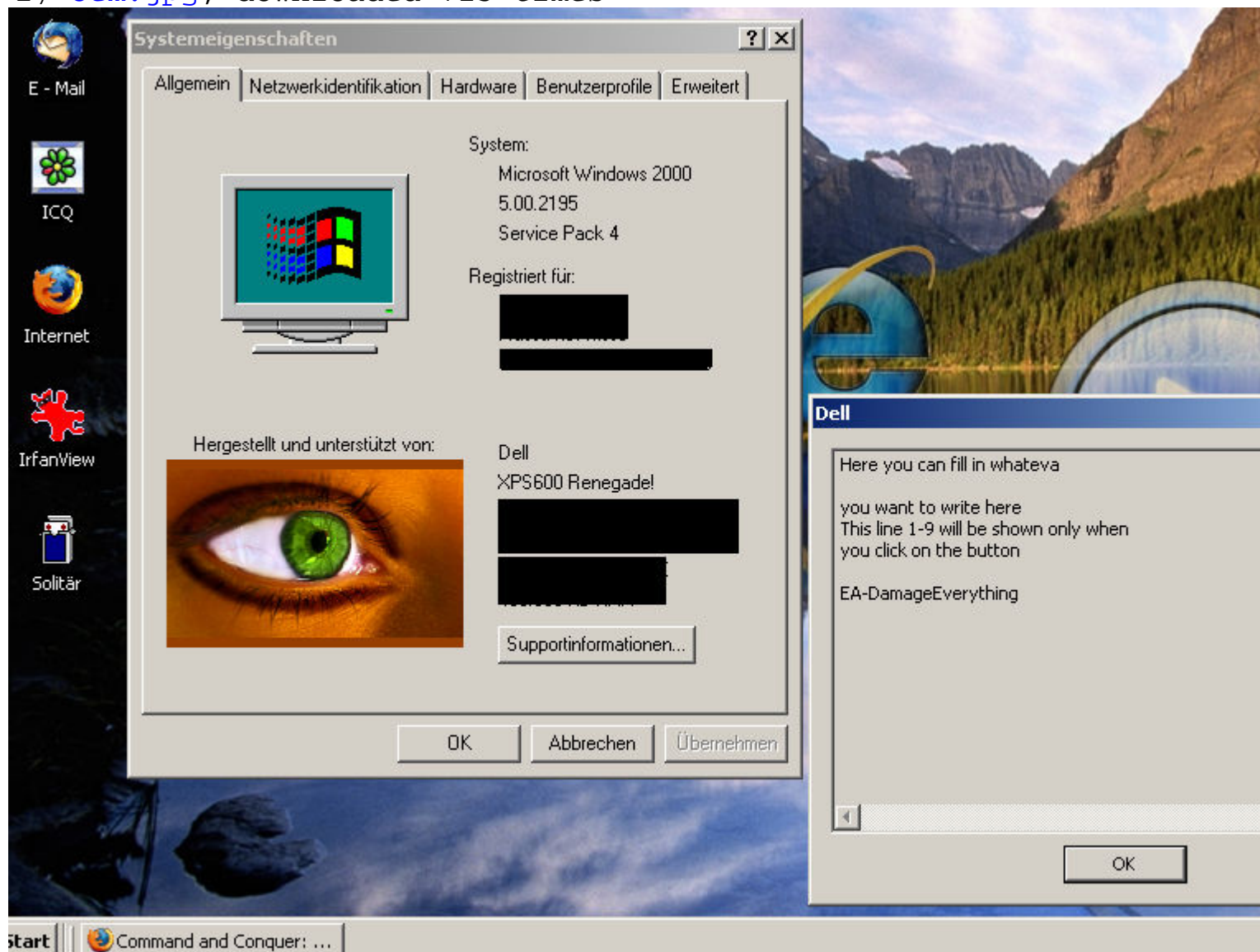
The two lines on dxdiag are "Manufacturer" + "Model". Take a look.

---

## File Attachments

---

1) [oem.jpg](#), downloaded 725 times



---

Subject: Re: How do I set these settings?

Posted by [icedog90](#) on Thu, 31 May 2007 05:52:12 GMT

[View Forum Message](#) <> [Reply to Message](#)

---

nice, IrfanView.

---