

---

Subject: CLOSED well not closed butdont need no more help on this  
Posted by [cpjok](#) on Sat, 15 Dec 2007 14:55:06 GMT  
[View Forum Message](#) <> [Reply to Message](#)

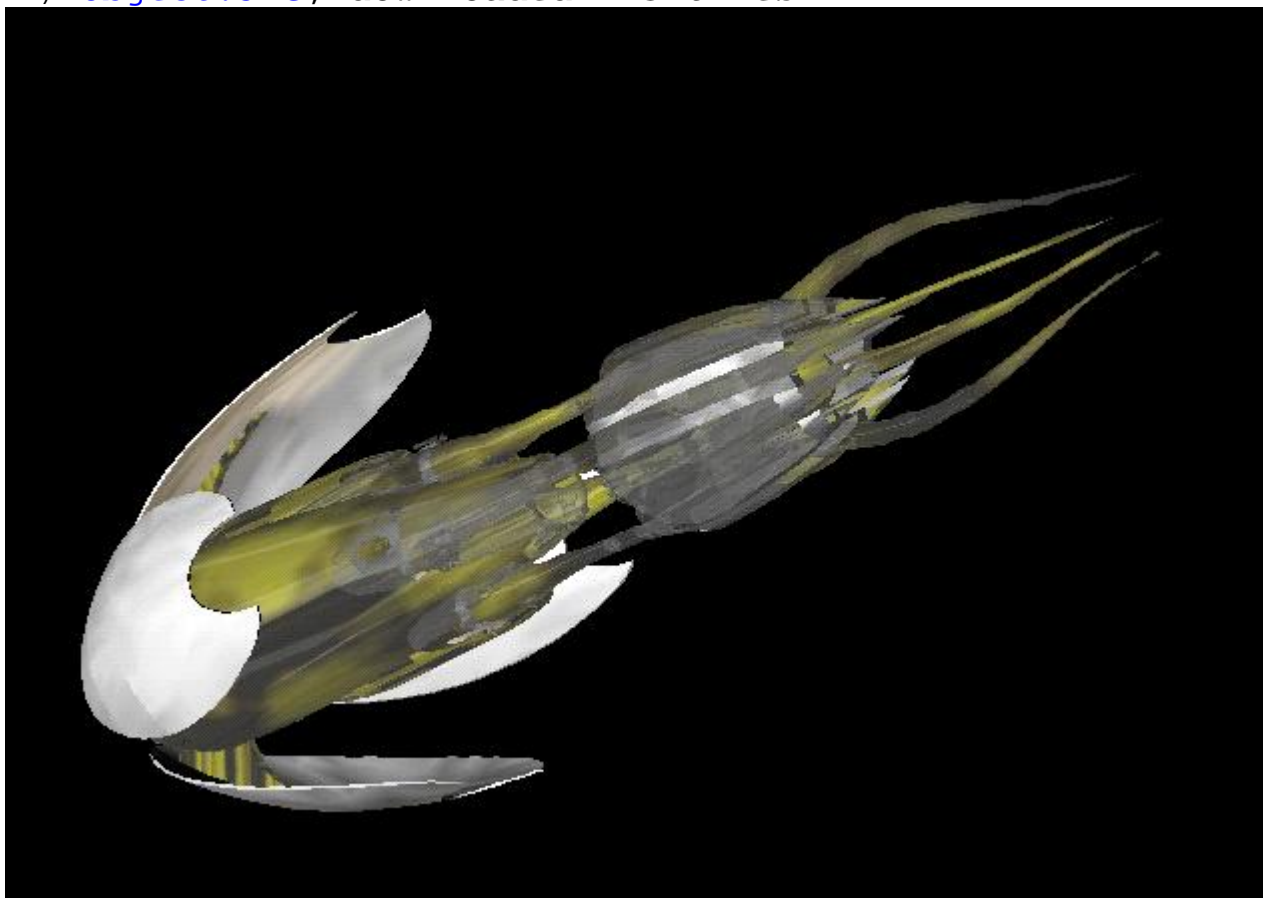
---

i have been trying each time i export it the model dosent work

This is the model it animates aswell

### File Attachments

1) [Object.JPG](#), downloaded 773 times



---

Subject: Re: how do i export a model in 3ds max to w3d  
Posted by [cpjok](#) on Sat, 15 Dec 2007 16:03:02 GMT  
[View Forum Message](#) <> [Reply to Message](#)

---

anyone know how i can get it to w3d and with it working

---

---

Subject: Re: how do i export a model in 3ds max to w3d  
Posted by [cnc95fan](#) on Sat, 15 Dec 2007 16:41:57 GMT  
[View Forum Message](#) <> [Reply to Message](#)

---

AFAIK the Max exporter doesn't work properly.

---

Subject: Re: how do i export a model in 3ds max to w3d  
Posted by [cpjok](#) on Sat, 15 Dec 2007 17:05:16 GMT  
[View Forum Message](#) <> [Reply to Message](#)

---

so how do i make a model into a w3d file

---

Subject: Re: how do i export a model in 3ds max to w3d  
Posted by [Slave](#) on Sat, 15 Dec 2007 18:06:19 GMT  
[View Forum Message](#) <> [Reply to Message](#)

---

Get max 7 or 8 and [http://www.renhelp.net/downloads/W3D\\_Exporter.zip](http://www.renhelp.net/downloads/W3D_Exporter.zip)  
For more info go to renhelp's download section.

---

Subject: Re: how do i export a model in 3ds max to w3d  
Posted by [Oblivion165](#) on Sat, 15 Dec 2007 19:11:50 GMT  
[View Forum Message](#) <> [Reply to Message](#)

---

cnc95fan wrote on Sat, 15 December 2007 11:41AFAIK the Max exporter doesn't work properly.

Max Exporter works 100%.

---

Subject: Re: how do i export a model in 3ds max to w3d  
Posted by [cnc95fan](#) on Sat, 15 Dec 2007 19:18:22 GMT  
[View Forum Message](#) <> [Reply to Message](#)

---

Caused my Max to crash. Engraving it into the bounds of virtual memory, forever. (its fucked up now, and I've hard of similar cases to mine).

---