

---

Subject: Error Plz Help

Posted by [\\_SSnipe\\_](#) on Fri, 04 Jan 2008 00:44:59 GMT

[View Forum Message](#) <> [Reply to Message](#)

---

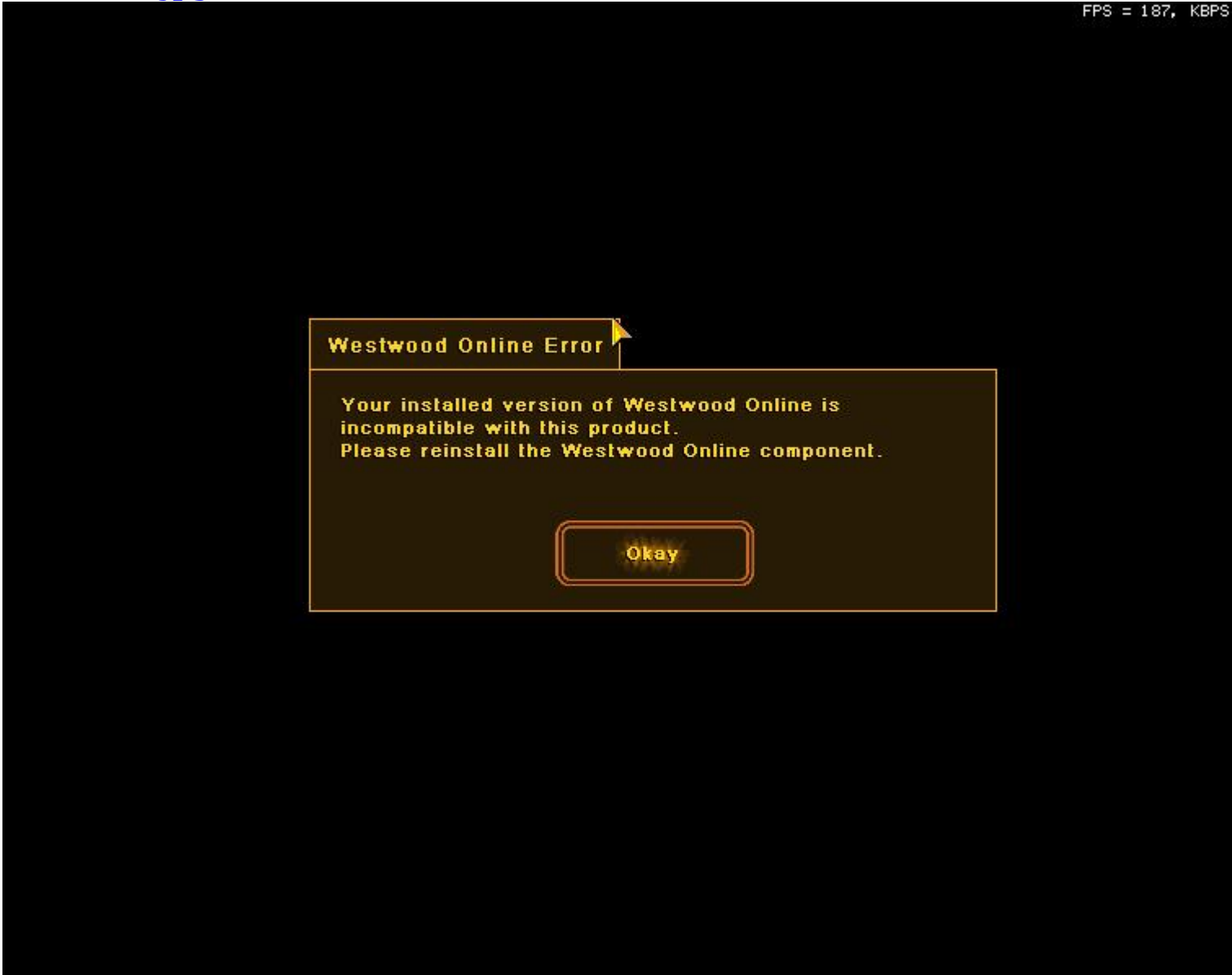
it was fine just an hour ago....

### File Attachments

---

1) [fuck.jpg](#), downloaded 818 times

FPS = 187, KBPS



---

Subject: Re: Error Plz Help

Posted by [cmatt42](#) on Fri, 04 Jan 2008 07:58:43 GMT

[View Forum Message](#) <> [Reply to Message](#)

---

Put your Renegade disk in and run the installer, but when the option comes, uncheck the Renegade game and just have WOL components checked and install. (you'll need your serial to do this by the way)

---

---

Subject: Re: Error Plz Help  
Posted by [Veyrdite](#) on Fri, 04 Jan 2008 08:07:49 GMT  
[View Forum Message](#) <> [Reply to Message](#)

---

Had the same problem a while back. Of course that fixed it.

---

---

Subject: Re: Error Plz Help  
Posted by [\\_SSnipe\\_](#) on Fri, 04 Jan 2008 08:16:23 GMT  
[View Forum Message](#) <> [Reply to Message](#)

---

ok one problem....i dont have the cd anymore....cant i fix it by installing the server fds wol components?

---

---

Subject: Re: Error Plz Help  
Posted by [Veyrdite](#) on Sat, 05 Jan 2008 06:25:30 GMT  
[View Forum Message](#) <> [Reply to Message](#)

---

I believe the fds patches these files.  
Didn't someone put up a link for an .iso of the first disc?

---

---

Subject: Re: Error Plz Help  
Posted by [\\_SSnipe\\_](#) on Sat, 05 Jan 2008 06:31:14 GMT  
[View Forum Message](#) <> [Reply to Message](#)

---

can someone give me the link to the fds first and let me try that plz?

---

---

Subject: Re: Error Plz Help  
Posted by [CarrierII](#) on Sat, 05 Jan 2008 18:09:55 GMT  
[View Forum Message](#) <> [Reply to Message](#)

---

ftp.westwood.com/pub/renegade

think.

---

---

Subject: Re: Error Plz Help  
Posted by [\\_SSnipe\\_](#) on Sun, 06 Jan 2008 21:27:04 GMT  
[View Forum Message](#) <> [Reply to Message](#)

---

i know there was a ftp but i forgot wat it was thanks

---

Subject: Re: Error Plz Help  
Posted by [renohol](#) on Wed, 06 Feb 2008 00:15:52 GMT  
[View Forum Message](#) <> [Reply to Message](#)

---

Help. I'm having the same problem as the original post, but I can't figure out how to access the installer like cmatt42 says to because Rengede is still installed and i dont want to uninstall and lose my 100 plus new maps. PS: I have the cd and case.

---

Subject: Re: Error Plz Help  
Posted by [Goztow](#) on Wed, 06 Feb 2008 07:38:52 GMT  
[View Forum Message](#) <> [Reply to Message](#)

---

You can keep all your maps by moving all ".mix"-files in your renegade/data directory to a different directory and then put them back in when you reinstalled.

Quoted from the FAQ sticky:

Quote:Problem

When I go online, I get a message "incompatible version of Westwood Online (WOL)

Solution

Normal Renegade

If you have normal ren (not the first decade), this is usually because you installed an older C&C-game (red alert 2, for exemple) after renegade and you installed WOL for it.

It will then install an older version of WOL over the renegade version and you'll get an incompatibility message.

To solve this, just launch the setup on the install disc and only select the WOL components to be installed. It'll reinstall WOL and your problem should be solved.

The First Decade version of Renegade

Do NOT patch The First Decade after installing it. It seems that one of the patches "breaks" the WOL install for some people.

---