

---

Subject: Helipads

Posted by [The Executor](#) on Mon, 25 Feb 2008 13:33:48 GMT

[View Forum Message](#) <> [Reply to Message](#)

---

Does anybody know where I can find the .w3d and the .gmax helipad files? As in I mean the helipad models? Or tell me how I can get them. Also does anybody know where I can get the NightRaid and NightRaid2 .lvl file?

---

---

Subject: Re: Helipads

Posted by [Jerad2142](#) on Mon, 25 Feb 2008 14:17:07 GMT

[View Forum Message](#) <> [Reply to Message](#)

---

Check the following using w3d importer:

mghe\_ag\_1.w3d

mnhel\_ag\_1.w3d

hel\_ag\_exp.w3d

---

---

Subject: Re: Helipads

Posted by [The Executor](#) on Mon, 25 Feb 2008 16:42:10 GMT

[View Forum Message](#) <> [Reply to Message](#)

---

What?

---

---

Subject: Re: Helipads

Posted by [renalpha](#) on Mon, 25 Feb 2008 21:03:46 GMT

[View Forum Message](#) <> [Reply to Message](#)

---

i would recommend you to teach this stuff yourself instead of asking every single thing,

renhelp.net helped me a lot

---

---

Subject: Re: Helipads

Posted by [The Executor](#) on Tue, 26 Feb 2008 20:38:52 GMT

[View Forum Message](#) <> [Reply to Message](#)

---

They have a tutorial on how to get helipads to work but not how to actually find the helipad files.

So thoes files are in the always.dat?

---

---

Subject: Re: Helipads  
Posted by [cnc95fan](#) on Tue, 26 Feb 2008 20:45:01 GMT  
[View Forum Message](#) <> [Reply to Message](#)

---

Yes.

---

Subject: Re: Helipads  
Posted by [Reaver11](#) on Tue, 26 Feb 2008 21:16:07 GMT  
[View Forum Message](#) <> [Reply to Message](#)

---

Jerad Gray wrote on Mon, 25 February 2008 08:17: Check the following using w3d importer:  
mghel\_ag\_1.w3d  
mnhel\_ag\_1.w3d  
hel\_ag\_exp.w3d

Arent these only the aggregates of the helipads?

---

Subject: Re: Helipads  
Posted by [crazfulla](#) on Wed, 27 Feb 2008 01:33:09 GMT  
[View Forum Message](#) <> [Reply to Message](#)

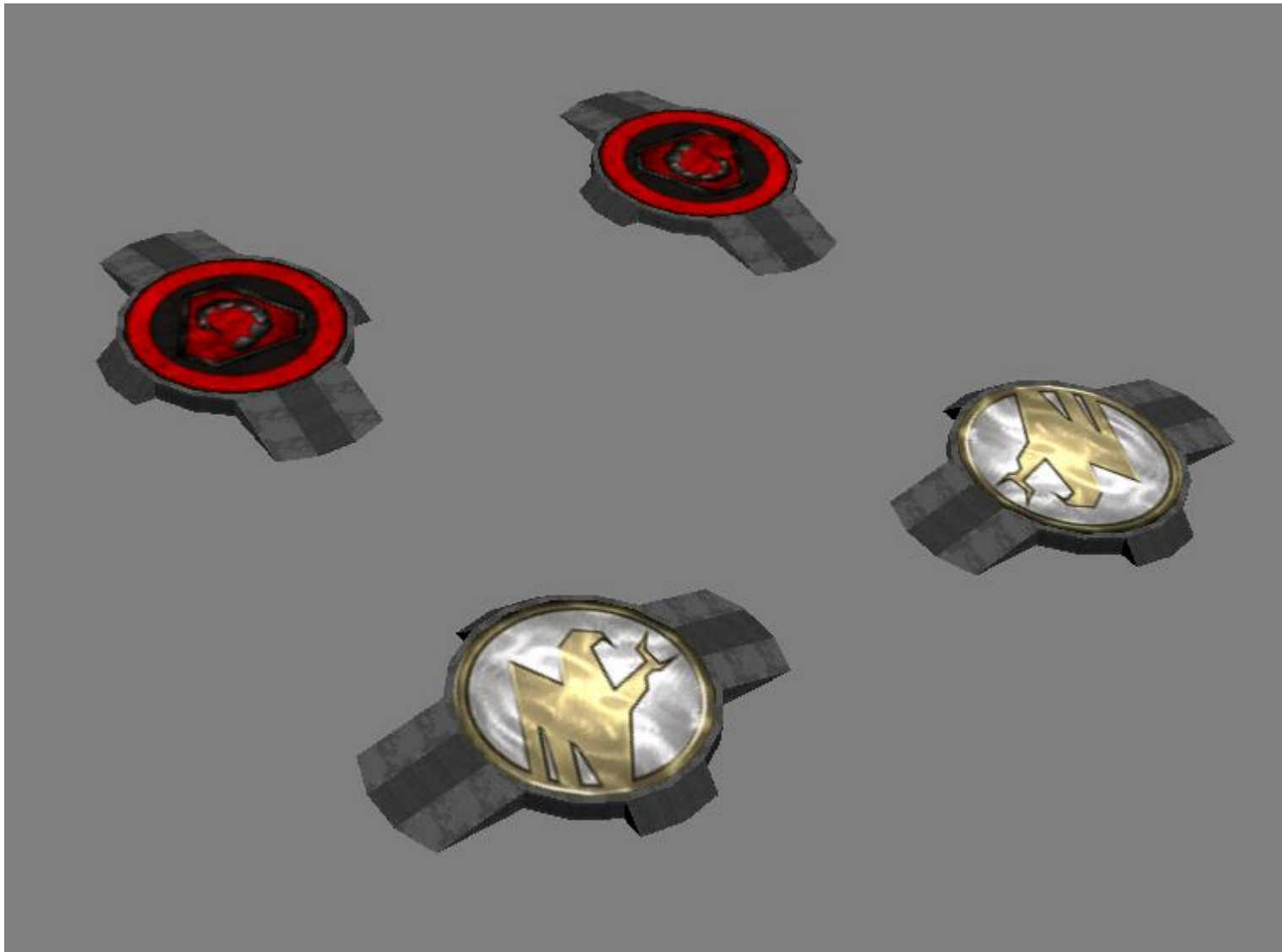
---

Click Below To Download

#### File Attachments

---

- 1) [helipads.gmax](#), downloaded 204 times
- 2) [helipads.jpg](#), downloaded 728 times



---

Subject: Re: Helipads

Posted by [Gen\\_Blacky](#) on Wed, 27 Feb 2008 04:21:29 GMT

[View Forum Message](#) <> [Reply to Message](#)

---

Reaver11 wrote on Tue, 26 February 2008 15:16Jerad Gray wrote on Mon, 25 February 2008 08:17Check the following using w3d importer:

mghel\_ag\_1.w3d

mnhel\_ag\_1.w3d

hel\_ag\_exp.w3d

Arent these only the aggregates of the helipads?

yes , hel\_ag\_exp.w3d is explosion animation or destroyed model.

---

---

Subject: Re: Helipads  
Posted by [crazfulla](#) on Wed, 27 Feb 2008 13:54:52 GMT  
[View Forum Message](#) <> [Reply to Message](#)

---

^ Above download has proxies for them.

---

Subject: Re: Helipads  
Posted by [cAmpa](#) on Wed, 27 Feb 2008 15:02:58 GMT  
[View Forum Message](#) <> [Reply to Message](#)

---

> question, is the GDI heliped w3d file somewhere in renegade?  
always.dat or in a map?

Found only the Nod heli ped stuff.

---

Subject: Re: Helipads  
Posted by [mr£ÄŞÄ-z](#) on Wed, 27 Feb 2008 15:06:09 GMT  
[View Forum Message](#) <> [Reply to Message](#)

---

cAmpa wrote on Wed, 27 February 2008 23:02> question, is the GDI heliped w3d file somewhere  
in renegade?  
always.dat or in a map?

Found only the Nod heli ped stuff.

Theres no GDI Helipad, only the Model of the Nod Helipad.

enc\_nhel

---

Subject: Re: Helipads  
Posted by [cAmpa](#) on Wed, 27 Feb 2008 15:08:16 GMT  
[View Forum Message](#) <> [Reply to Message](#)

---

Crap WW.  
I think same is with the Silo, found only the Nod one.

---

Subject: Re: Helipads  
Posted by [The Executor](#) on Wed, 27 Feb 2008 16:32:31 GMT  
[View Forum Message](#) <> [Reply to Message](#)

---

Then how did we get the GDI one? We just applied the GDI logo and for the silo added the GDI

---

base colorus?

Also can somebody post the silos.gmax file? and ty for the helipads.

And why worry about the GDI helipad.w3d? He already posted the .gmax file for BOTH helipads (GDI and NOD)

---

---

Subject: Re: Helipads

Posted by [The Executor](#) on Wed, 27 Feb 2008 16:35:23 GMT

[View Forum Message](#) <> [Reply to Message](#)

---

Gen\_Blacky wrote on Tue, 26 February 2008 22:21Reaver11 wrote on Tue, 26 February 2008 15:16Jerad Gray wrote on Mon, 25 February 2008 08:17Check the following using w3d importer:  
mghel\_ag\_1.w3d  
mnhel\_ag\_1.w3d  
hel\_ag\_exp.w3d

Arent these only the aggregates of the helipads?

yes , hel\_ag\_exp.w3d is explosion animation or destroyed model.

Yes okay but isent the others just like the outer rim the aggregates not the full helipad.

---

---

Subject: Re: Helipads

Posted by [cAmpa](#) on Wed, 27 Feb 2008 19:02:56 GMT

[View Forum Message](#) <> [Reply to Message](#)

---

I want to use Silo's and heli peds only Serverside, without new maps or client modification.

---

---

Subject: Re: Helipads

Posted by [Reaver11](#) on Wed, 27 Feb 2008 20:15:52 GMT

[View Forum Message](#) <> [Reply to Message](#)

---

Set a silo model as vehicle \ object and then script it with the money generate script.

---

---

Subject: Re: Helipads

Posted by [Gen\\_Blacky](#) on Thu, 28 Feb 2008 04:01:26 GMT

[View Forum Message](#) <> [Reply to Message](#)

---

cAmpa wrote on Wed, 27 February 2008 13:02I want to use Silo's and heli peds only Serverside, without new maps or client modification.

---

there are no silos in the always.dat only the exploding animation , no silos where used in any of the Westwood maps.

Question is snow a Westwood map ? or is there silo in single player.

I don't know if its possible to make a duplicate of (enc\_nhel.w3d) nod heli in objects and then change the texture name (hnd\_heli.dds) of one of presets using scripts and still being server side. Then you would still have to have people download the texture. I don't think gdi heli pad texture is in always.

Please tell me if this would work ?

---

Subject: Re: Helipads  
Posted by [jonwil](#) on Thu, 28 Feb 2008 07:56:45 GMT  
[View Forum Message](#) <> [Reply to Message](#)

There are silos in the nod base infiltration map (with the crashed spaceship) over near the airstrip and also on at least one other single player map, the name of which escapes me.

---

Subject: Re: Helipads  
Posted by [Veyrdite](#) on Thu, 28 Feb 2008 08:32:46 GMT  
[View Forum Message](#) <> [Reply to Message](#)

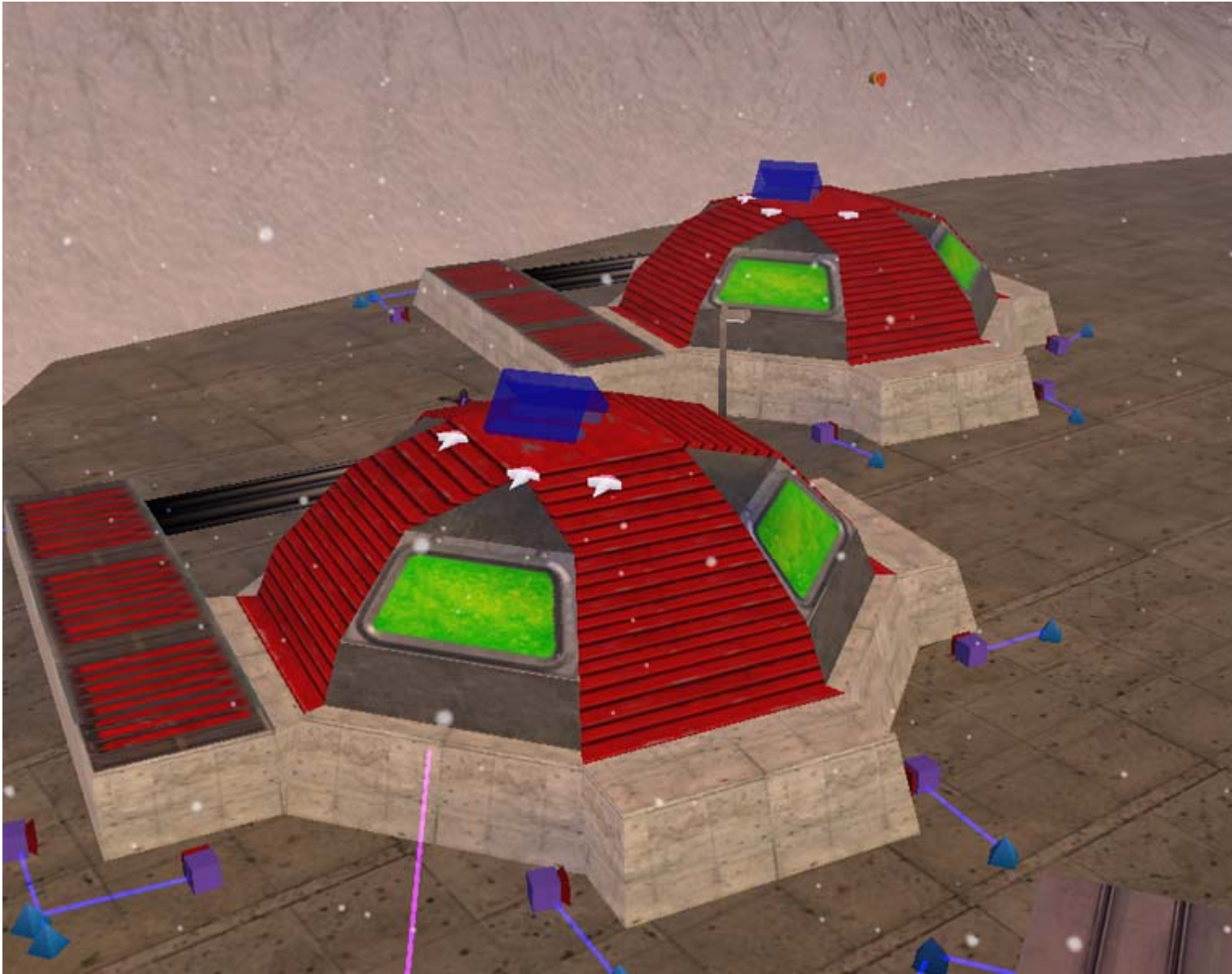
End of M02 there's some nod silos.

EDIT:

---

### File Attachments

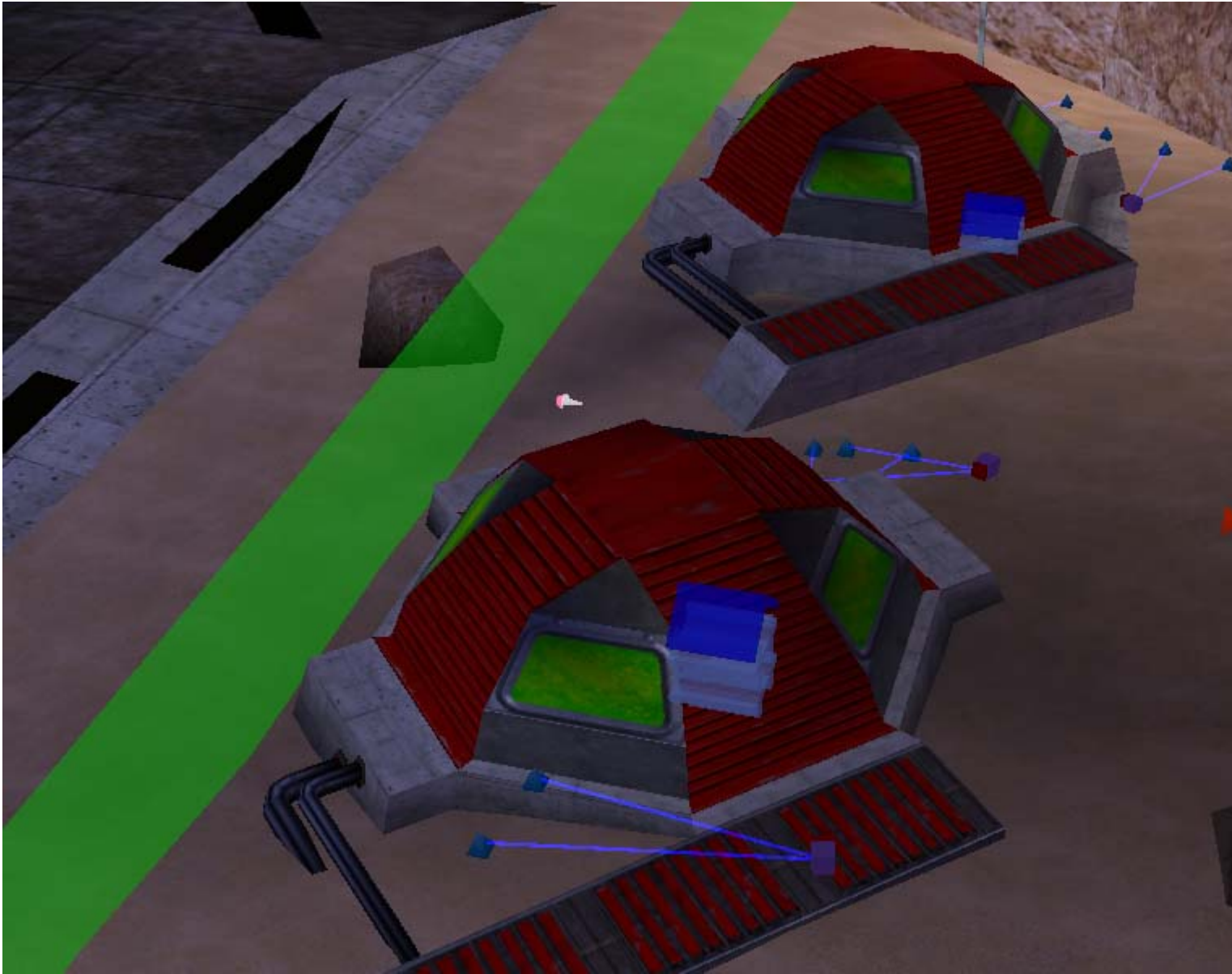
1) [LE\\_M02\\_NodSilo.jpg](#), downloaded 635 times



2) [LE\\_M02\\_NodSilo\\_thumb.jpg](#), downloaded 639 times



3) [LE\\_M02\\_NodSilo\\_02.jpg](#), downloaded 632 times



4) [LE\\_M02\\_NodSilo\\_thumb\\_02.jpg](#), downloaded 626 times



---

Subject: Re: Helipads

Posted by [The Executor](#) on Thu, 28 Feb 2008 11:01:19 GMT

[View Forum Message](#) <> [Reply to Message](#)

---

Or you could go to renhelp and get the "AlternateMPbuildings" pack and export the silo from there.

I have the silo attached below. It's the advanced one. Windows are a bit messed up sorry (Could be fixed by a simple texture change)

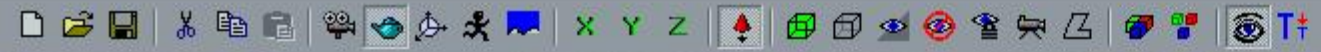
---

#### File Attachments

1) [Silo.jpg](#), downloaded 644 times

Skirmish00 - Commando Level Editor

File Edit View Object Vis Pathfinding Lighting Sounds Camera Strings Presets



Picked model: BUILDINGICON  
Picked model: BUILDINGICON  
TimeManager::Update: warning, frame 8718 was slow (3756 ms)

Ready

Skirmish00

2) [enc\\_nsil.w3d](#), downloaded 223 times

---