
Subject: LevelEdit

Posted by [KristyGirl](#) on Mon, 16 Jun 2008 07:54:46 GMT

[View Forum Message](#) <> [Reply to Message](#)

How do I move around in LevelEdit with a laptop? It does not seem to work for me.

Subject: Re: LevelEdit

Posted by [nopol10](#) on Mon, 16 Jun 2008 08:27:56 GMT

[View Forum Message](#) <> [Reply to Message](#)

Turn on the numpad key and press the keys that act as the numpad on the keyboard. Using the Fn key should also help.

Subject: Re: LevelEdit

Posted by [KristyGirl](#) on Mon, 16 Jun 2008 09:38:41 GMT

[View Forum Message](#) <> [Reply to Message](#)

It still does not work.

Subject: Re: LevelEdit

Posted by [Reaver11](#) on Mon, 16 Jun 2008 09:56:35 GMT

[View Forum Message](#) <> [Reply to Message](#)

plug in a mouse and you are set

Subject: Re: LevelEdit

Posted by [IronWarrior](#) on Mon, 16 Jun 2008 10:26:47 GMT

[View Forum Message](#) <> [Reply to Message](#)

Do you know how to move first in the LE?

You have clicked the XYZ buttons in the top first right?

Subject: Re: LevelEdit

Posted by [KristyGirl](#) on Mon, 16 Jun 2008 12:59:53 GMT

[View Forum Message](#) <> [Reply to Message](#)

Oh, thanks it actually works now. Thank you.

Subject: Re: LevelEdit
Posted by [IronWarrior](#) on Mon, 16 Jun 2008 14:30:19 GMT
[View Forum Message](#) <> [Reply to Message](#)

KristyGirl wrote on Mon, 16 June 2008 07:59Oh, thanks it actually works now. Thank you.

You are welcome.

Subject: Re: LevelEdit
Posted by [R315r4z0r](#) on Mon, 16 Jun 2008 14:31:37 GMT
[View Forum Message](#) <> [Reply to Message](#)

IronWarrior wrote on Mon, 16 June 2008 06:26You have clicked the XYZ buttons in the top first right?
Clicking those are for moving objects on the map on the X, Y, and Z axis... not your camera.

Subject: Re: LevelEdit
Posted by [reborn](#) on Mon, 16 Jun 2008 14:57:58 GMT
[View Forum Message](#) <> [Reply to Message](#)

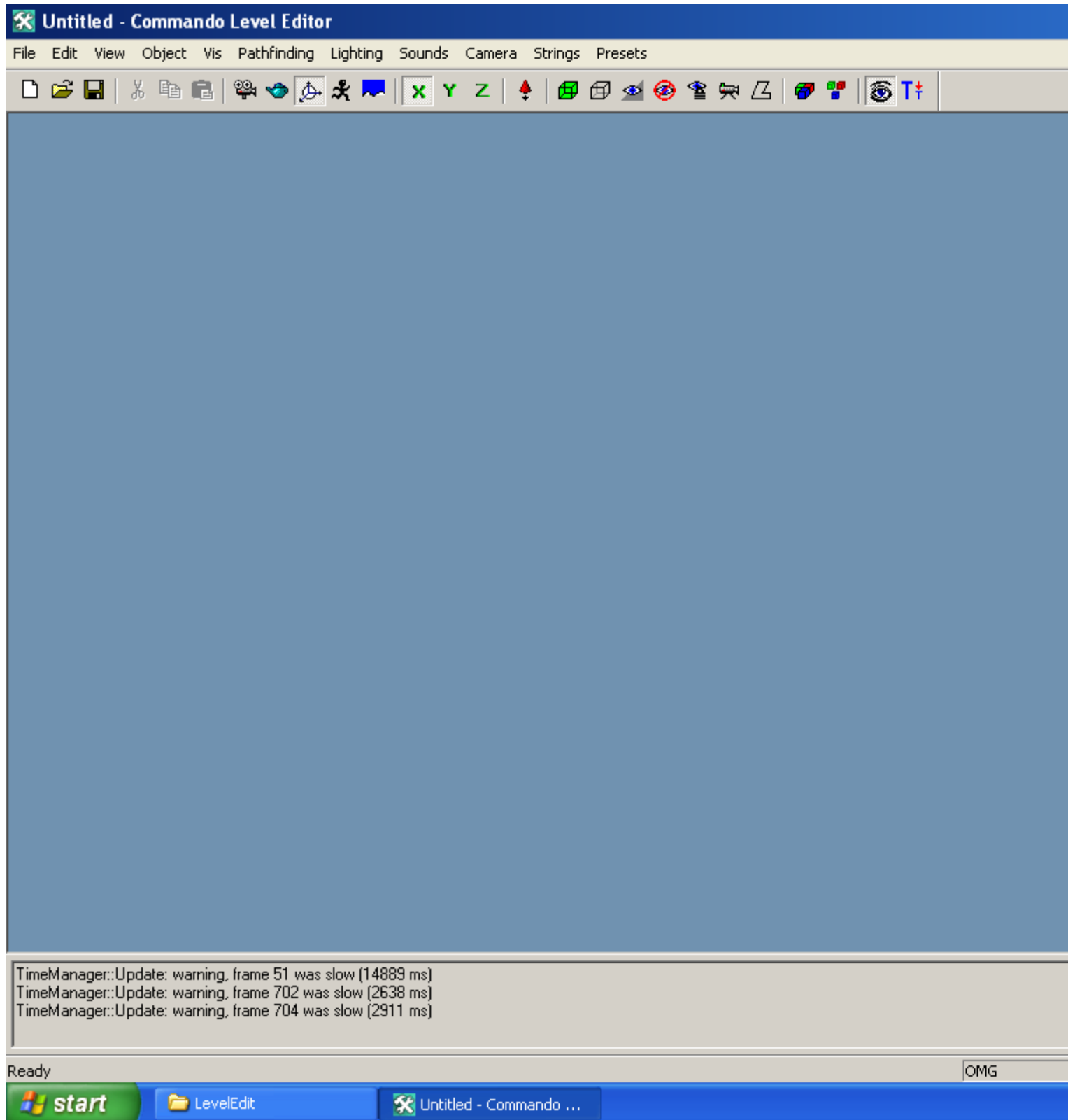
That isn't true, click the camera icon or press f5, then you're free to use the x,y and z button to move your camera around.

Subject: Re: LevelEdit
Posted by [KristyGirl](#) on Mon, 16 Jun 2008 17:54:43 GMT
[View Forum Message](#) <> [Reply to Message](#)

Okay, nevermind. It is not working. What am I doing wrong? I attached a screenshot below.

File Attachments

1) [LevelEdit_Help.PNG](#), downloaded 334 times



Subject: Re: LevelEdit
Posted by [reborn](#) on Mon, 16 Jun 2008 18:48:32 GMT

[View Forum Message](#) <> [Reply to Message](#)

Press f5, this will take you to the camera tool, Or just click the little video recorder looking symbol.
