

---

Subject: need help on how to disable dds files  
Posted by [wittebolx](#) on Sun, 20 Jul 2008 19:26:42 GMT  
[View Forum Message](#) <> [Reply to Message](#)

---

pterm\_pwr-b and pterm\_pwr  
are blocking a part of the custom PT pictures, how can i disable those dds files?

---

---

Subject: Re: need help on how to disable dds files  
Posted by [mr£Ä\\$Ä-z](#) on Sun, 20 Jul 2008 19:32:58 GMT  
[View Forum Message](#) <> [Reply to Message](#)

---

Delete?

---

---

Subject: Re: need help on how to disable dds files  
Posted by [anant](#) on Sun, 20 Jul 2008 20:16:45 GMT  
[View Forum Message](#) <> [Reply to Message](#)

---

OPEN UP DATA FOLDER, TYPE IN NAME OF FILE, DELETE =)

---

---

Subject: Re: need help on how to disable dds files  
Posted by [saberhawk](#) on Sun, 20 Jul 2008 20:48:39 GMT  
[View Forum Message](#) <> [Reply to Message](#)

---

wittebolx wrote on Sun, 20 July 2008 14:26pterm\_pwr-b and pterm\_pwr  
are blocking a part of the custom PT pictures, how can i disable those dds files?

Provided they allow alpha channels, just make them 100% transparent.

---

---

Subject: Re: need help on how to disable dds files  
Posted by [wittebolx](#) on Sun, 20 Jul 2008 23:12:54 GMT  
[View Forum Message](#) <> [Reply to Message](#)

---

Saberhawk wrote on Sun, 20 July 2008 22:48wittebolx wrote on Sun, 20 July 2008  
14:26pterm\_pwr-b and pterm\_pwr  
are blocking a part of the custom PT pictures, how can i disable those dds files?

Provided they allow alpha channels, just make them 100% transparent.

already tried that, photoshop wont allow me to save them as .dds  
any new ideas?

---

Subject: Re: need help on how to disable dds files  
Posted by [\\_SSnipe\\_](#) on Sun, 20 Jul 2008 23:21:38 GMT  
[View Forum Message](#) <> [Reply to Message](#)

---

got the plugin for photoshop? to save .dds

---

---

Subject: Re: need help on how to disable dds files  
Posted by [saberhawk](#) on Mon, 21 Jul 2008 02:10:31 GMT  
[View Forum Message](#) <> [Reply to Message](#)

---

wittebolx wrote on Sun, 20 July 2008 18:12Saberhawk wrote on Sun, 20 July 2008 22:48wittebolx wrote on Sun, 20 July 2008 14:26pterm\_pwr-b and pterm\_pwr are blocking a part of the custom PT pictures, how can i disable those dds files?

Provided they allow alpha channels, just make them 100% transparent.

already tried that, photoshop wont allow me to save them as .dds  
any new ideas?

Download/install these;

[http://developer.nvidia.com/object/photoshop\\_dds\\_plugins.html](http://developer.nvidia.com/object/photoshop_dds_plugins.html)

---

---

Subject: Re: need help on how to disable dds files  
Posted by [Spyder](#) on Mon, 21 Jul 2008 13:01:03 GMT  
[View Forum Message](#) <> [Reply to Message](#)

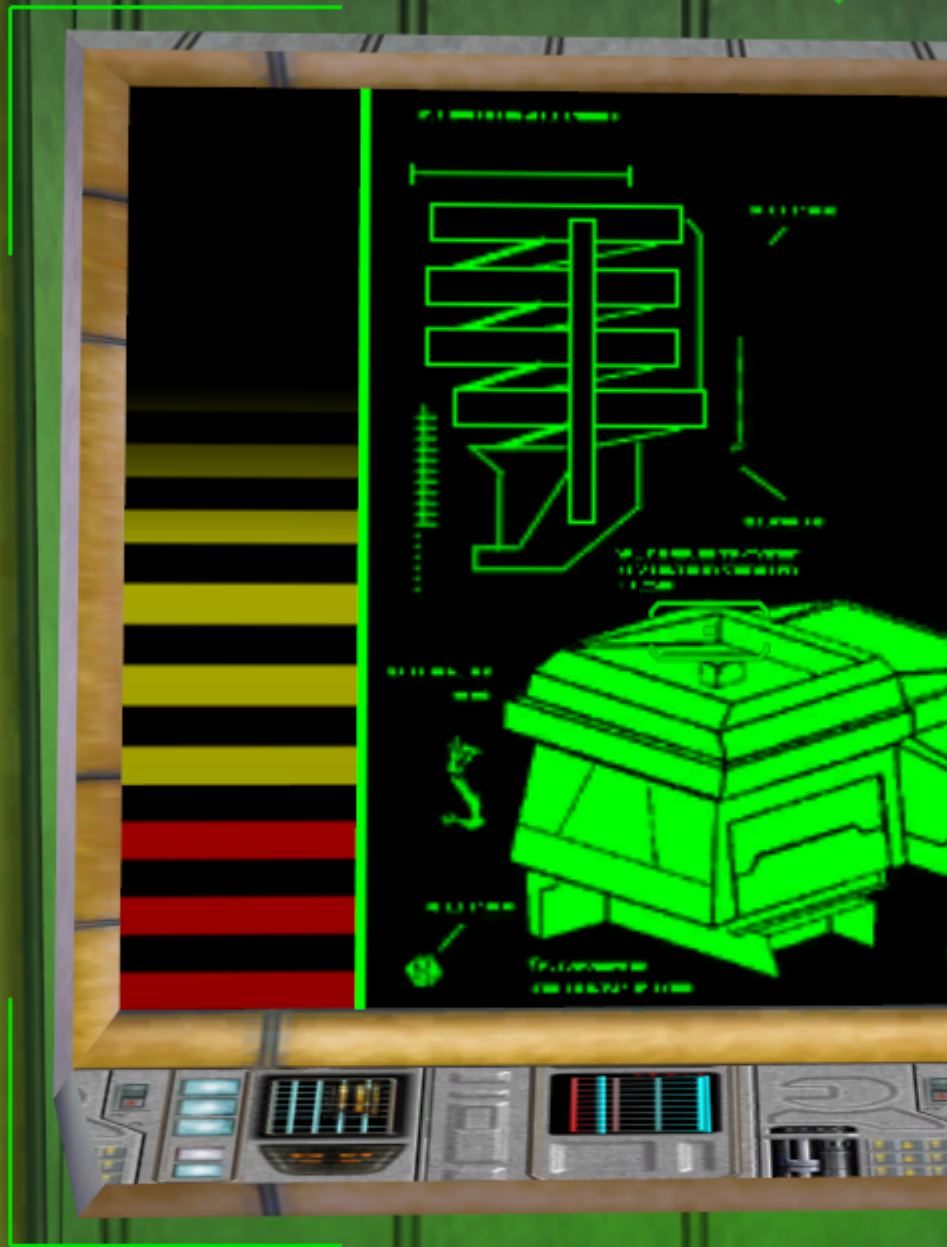
---

I just made the textures black and this is the result:

And the files are below

#### File Attachments

- 1) [pterm.rar](#), downloaded 145 times
- 2) [ScreenShot06.png](#), downloaded 473 times



 Purchase To



Credits: 100065

Subject: Re: need help on how to disable dds files  
Posted by [wittebolx](#) on Mon, 21 Jul 2008 22:47:31 GMT  
[View Forum Message](#) <> [Reply to Message](#)

---

thx for the replies, but i need them just to be gone, like they dont even exist, removing the pic or making it black isnt helping, i need to see the full background of the PT

---

---

Subject: Re: need help on how to disable dds files  
Posted by [Spyder](#) on Tue, 22 Jul 2008 07:30:15 GMT  
[View Forum Message](#) <> [Reply to Message](#)

---

Send me a replacement background and i'll see what I can do

---

---

Subject: Re: need help on how to disable dds files  
Posted by [saberhawk](#) on Tue, 22 Jul 2008 08:26:33 GMT  
[View Forum Message](#) <> [Reply to Message](#)

---

I said blank out the alpha channel... What's so hard to understand about that?

#### File Attachments

1) [pterm.zip](#), downloaded 118 times

---

---

Subject: Re: need help on how to disable dds files  
Posted by [wittebolx](#) on Tue, 22 Jul 2008 09:12:18 GMT  
[View Forum Message](#) <> [Reply to Message](#)

---

Saberhawk wrote on Tue, 22 July 2008 10:26 I said blank out the alpha channel... What's so hard to understand about that?

the result...  
see why i dont want the power logo...

---

---

Subject: Re: need help on how to disable dds files  
Posted by [Zion](#) on Tue, 22 Jul 2008 09:18:38 GMT  
[View Forum Message](#) <> [Reply to Message](#)

---

If it's returning black, you're not saving the alpha channel correctly. Try again.

Without editing the W3D file, you can't remove that peice, the only thing you can do it blank it out with alpha.

---

---

Subject: Re: need help on how to disable dds files  
Posted by [wittebolx](#) on Tue, 22 Jul 2008 10:21:51 GMT  
[View Forum Message](#) <> [Reply to Message](#)

---

Zion wrote on Tue, 22 July 2008 11:18If it's returning black, you're not saving the alpha channel correctly. Try again.

Without editing the W3D file, you can't remove that peice, the only thing you can do it blank it out with alpha.

i cant seem to fix it myslf, so if someone is willing to help..

---

Subject: Re: need help on how to disable dds files  
Posted by [Omar007](#) on Tue, 22 Jul 2008 11:40:45 GMT  
[View Forum Message](#) <> [Reply to Message](#)

---

Nero wrote on Tue, 22 July 2008 09:30Send me a replacement background and i'll see what I can do

Nero was willing to do it for you. I should say accept the offer

---

Subject: Re: need help on how to disable dds files  
Posted by [mr£Ä\\$Ä·z](#) on Tue, 22 Jul 2008 15:35:25 GMT  
[View Forum Message](#) <> [Reply to Message](#)

---

When these doesnt work then you can just get it work by ReExporting the PCT

---

### File Attachments

- 1) [pterm\\_pwr.dds](#), downloaded 151 times
  - 2) [pterm\\_pwr-b.dds](#), downloaded 134 times
-