

---

Subject: Sciencepark Renegademap

Posted by [RedOne](#) on Tue, 09 Dec 2008 00:02:01 GMT

[View Forum Message](#) <> [Reply to Message](#)

---

Hi all,

I asked several questions in this forum for a map I been making. Some people asked me to put some screenshots here.

Sciencepark is an studenthousing project in Amsterdam. I was an electrician over there in the building progress.

In that time I also was playing Renegade again and I had the idea that this map was good for several types of gameplay.

With many thanks to the people who made and post on renhelp.net and this forum (reading (very)old topics and posting) I created a begin of the map. I restarted several times because i always thought it could better. And the mapsize(kb) always get smaller each time.

For example: In the beginning I made the floor in many meshes. Now the floor is one singel mesh.

The reallife building has 721 apartments. 6 elevators. etc etc.

The glass wall is better to be seen here as in the other topic.

A lot skinning had to be done also but I want to wait till the last because I saw that I had some problems to change meshes that are skinned/textured. The glass wall is ok now so I skinned it.

This side is ok now to so I textured that also. It is mad fromtwo meshes. Each window is a mesh to and breakable.

Between the floors there wil come appartmens. How many depends on the size of the file. I dont want it to be huge. Because I worked in it so I have al the autocad drawings on my computer. The measurements are to a cm the same like the real building.

This is the shape of the building. It can be use for close combat CTF or you name it. Dont pay attention to the land around it. I had to make something to test the map someimes.

A floor is a mesh. With boolean I mad some holes for the stairs. First I mad real stairs. My filesice (mix) become 75 Mb. So I mad a stair from two meshes ( could be one if I had calculated it right). With boolean I will also make the holes for the alevator.

I made this topic to let you al see where I am busy on so you know a bit why my questions are. Mostly I try to find the answers in older topics or tuts. Why I make the map? Just for fun. I like to be busy on 3d drawing. So i wanted a subject and made a project out of it. I am now busy on anothe building. Maybe I wil do the same with that. But for now, I have my hands full with this one.

Thx for your help and attention.

(sorry for the poor english)

Link: (dutch)About sciencepark.

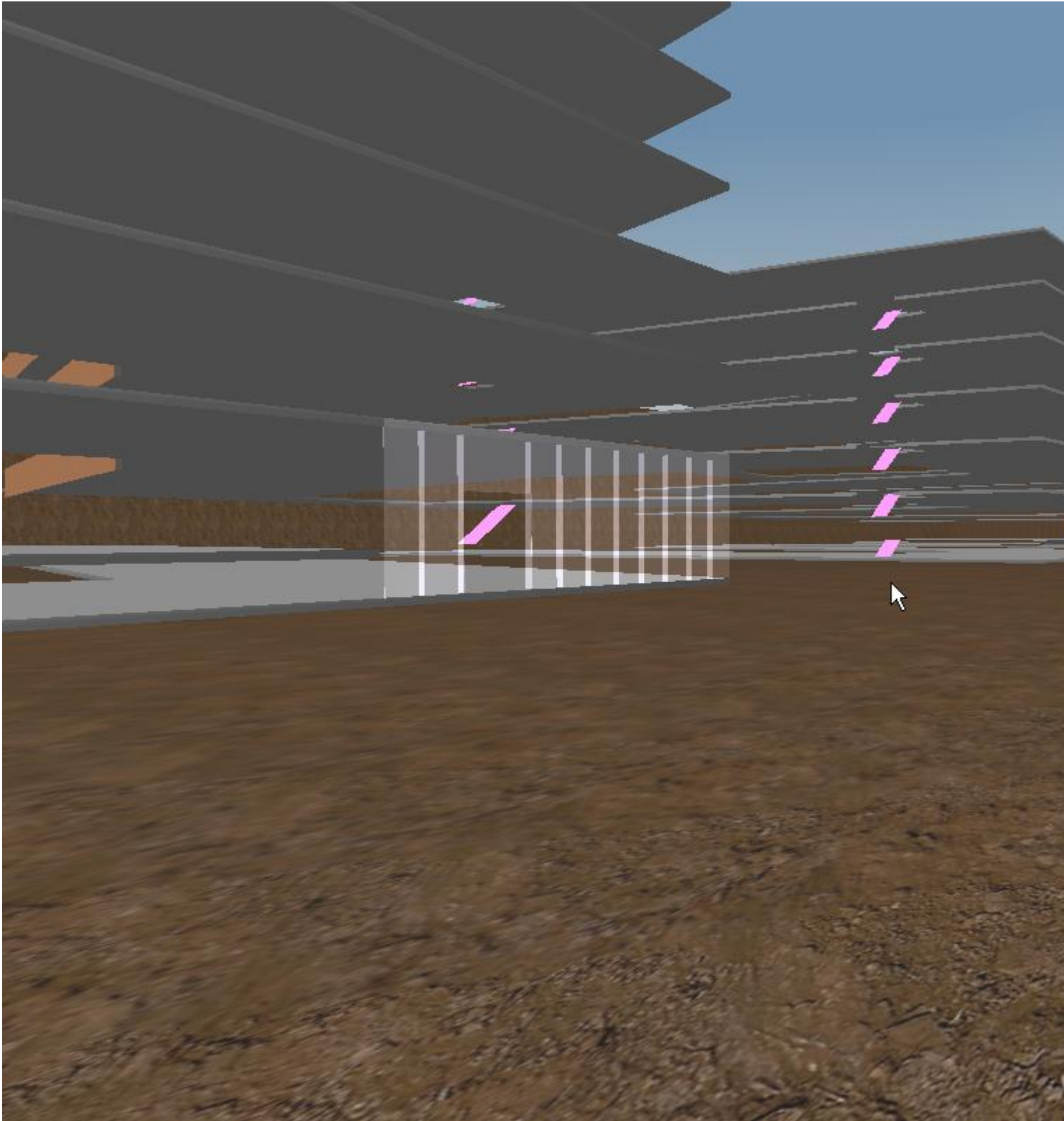
<http://www.uva.nl/huisvesting/watergraafsmeer.cfm/3C6A42D9-21F4-4543-966D6A029451A11D>

If you have a question, tip or just something to say about it, please do.

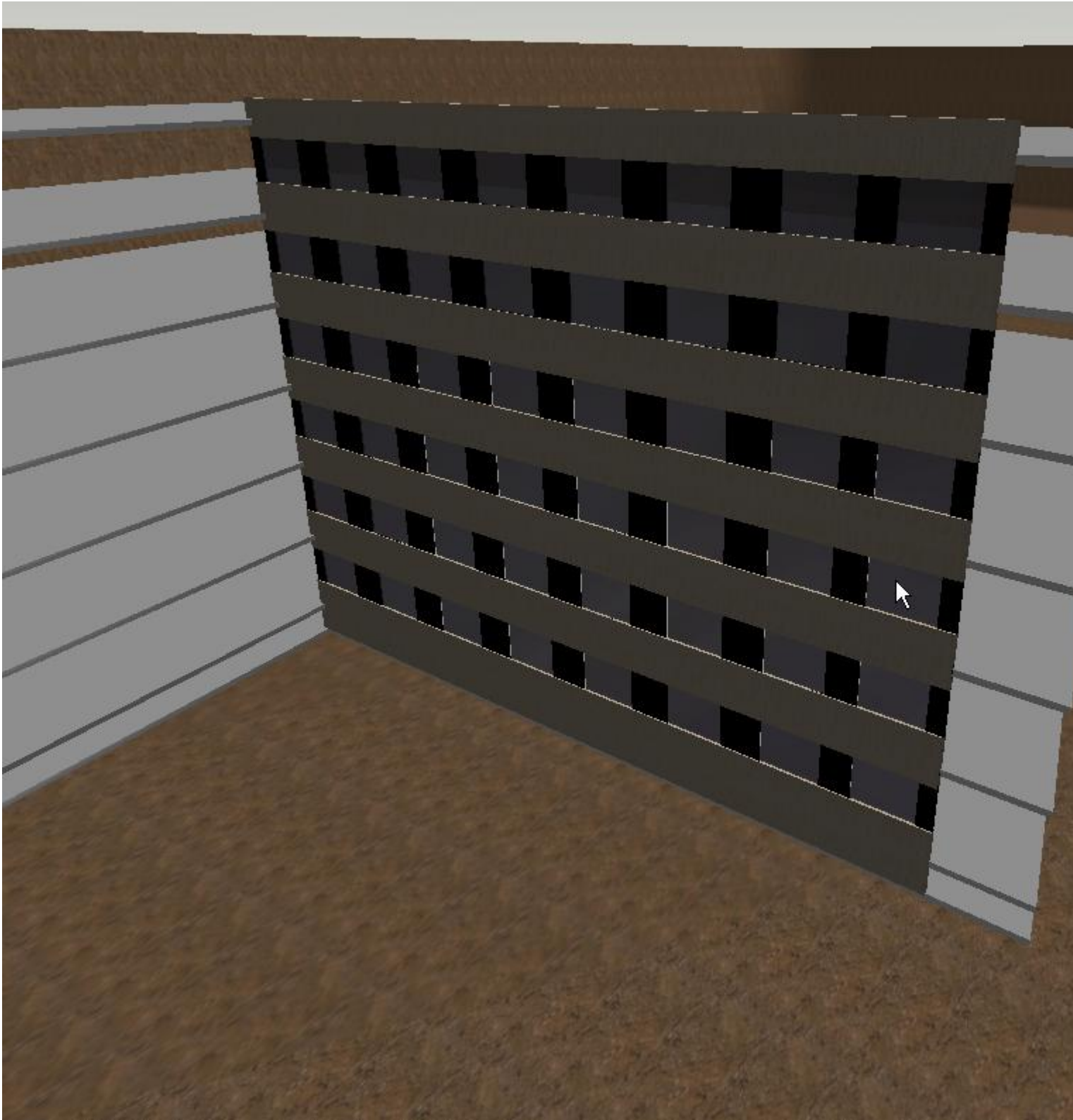
GrTz Rene

## File Attachments

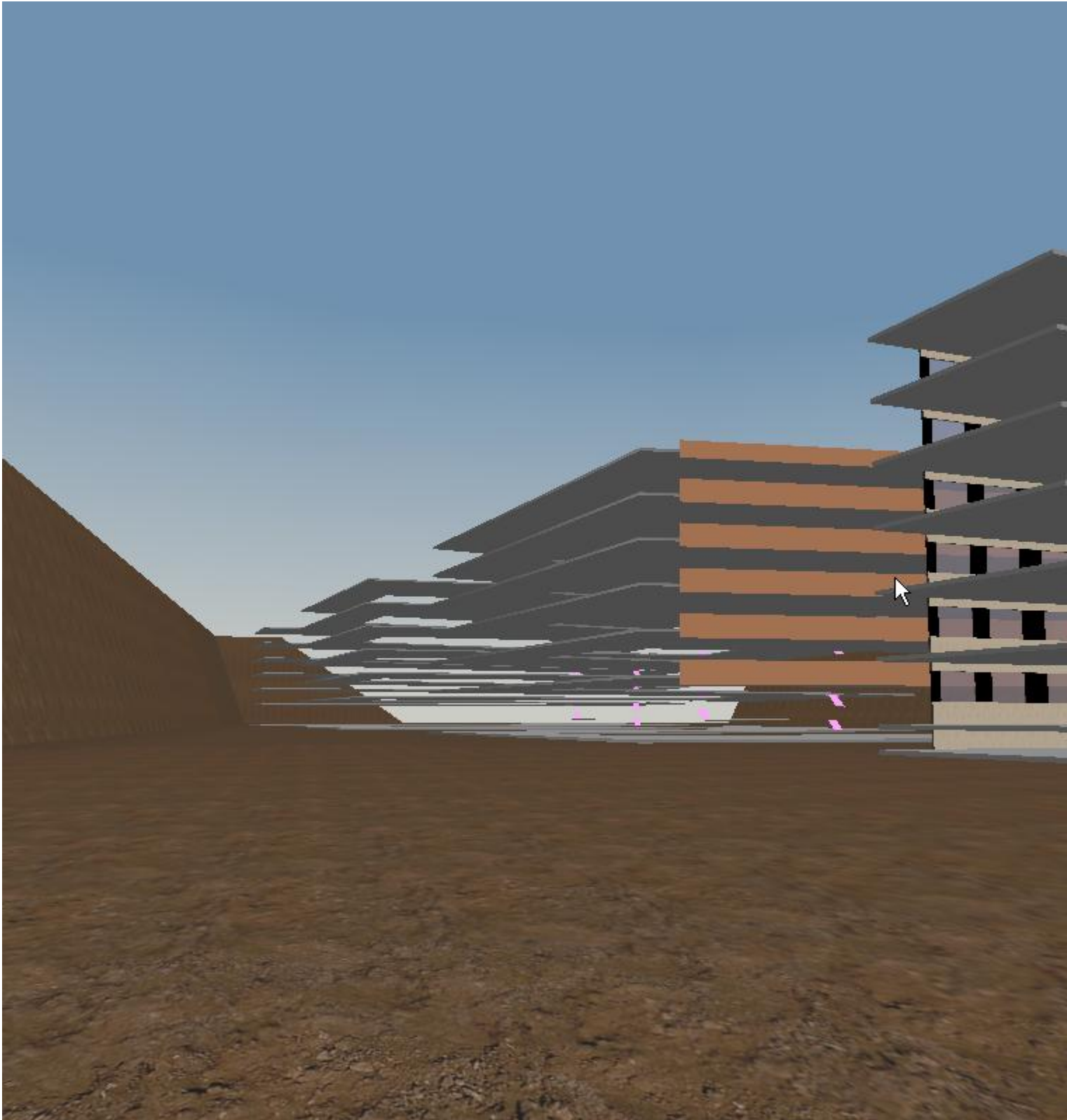
1) [ScreenShot001.jpg](#), downloaded 1209 times



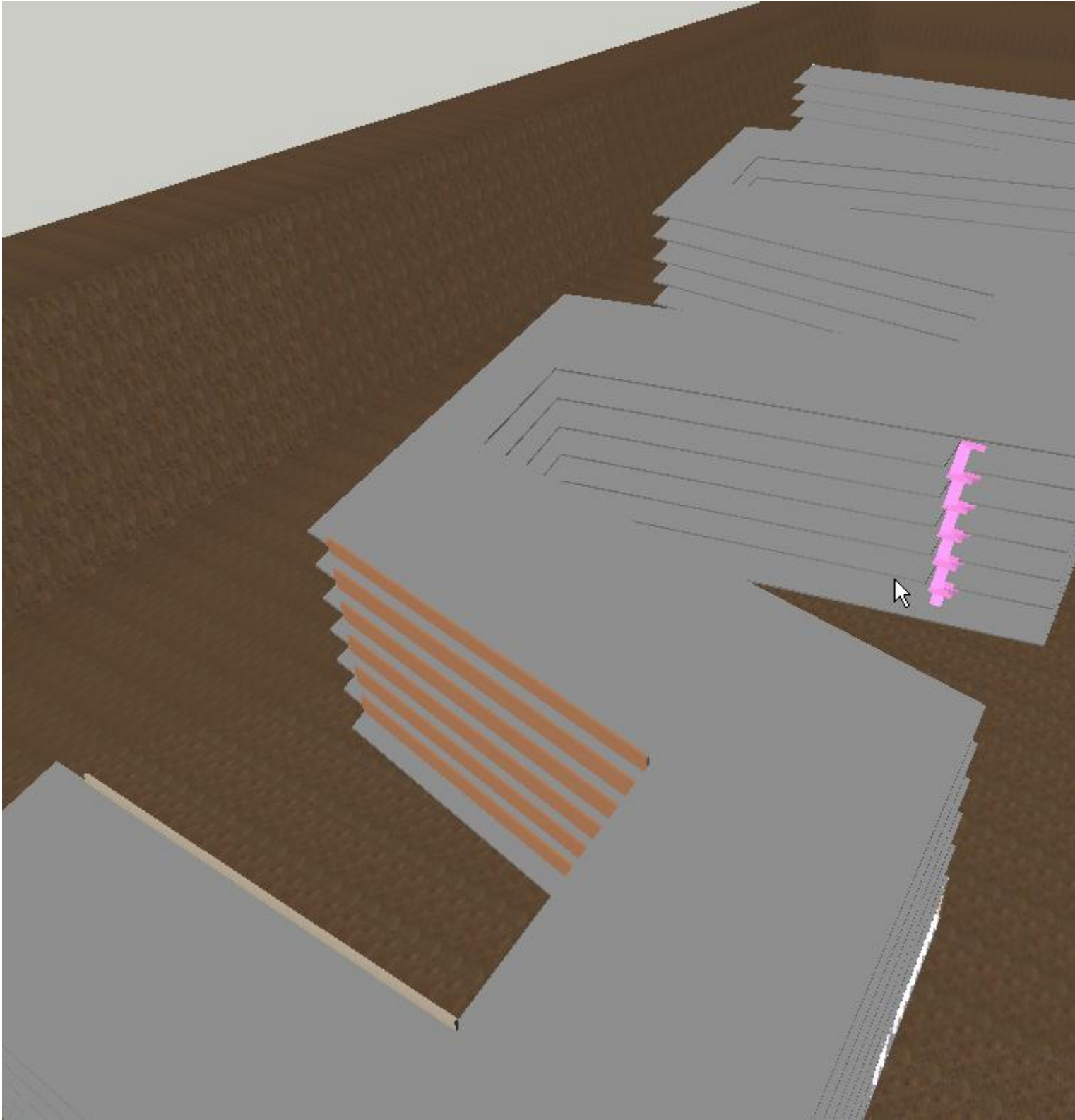
2) [ScreenShot002.jpg](#), downloaded 1220 times



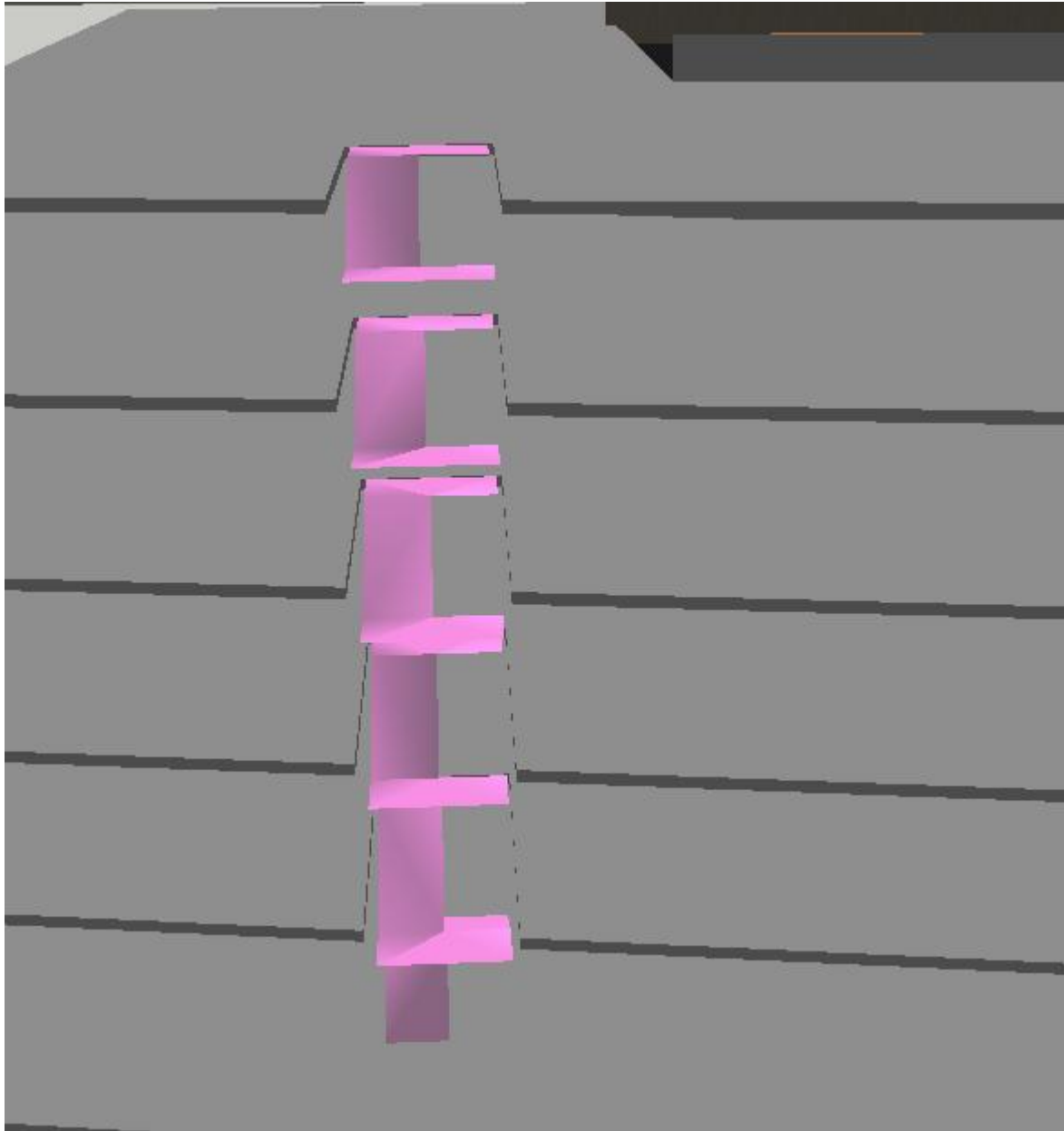
3) [ScreenShot003.jpg](#), downloaded 1208 times



4) [ScreenShot004.jpg](#), downloaded 1209 times



5) [ScreenShot005.jpg](#), downloaded 1214 times



---

Subject: Re: Sciencepark Renegademap  
Posted by [GEORGE ZIMMER](#) on Tue, 09 Dec 2008 00:31:20 GMT  
[View Forum Message](#) <> [Reply to Message](#)

---

Holy shit, that's TERRIBLE. Sorry, but it's just a bunch of crap thrown together. Use extrude, weld, and please, do NOT use more than 2 poly's per flat surface (It's technically two since a plane is two triangles, but yeah).

Maybe I'm wrong about the poly usage, but, show wireframe pics from gmax.

---

Subject: Re: Sciencepark Renegademap  
Posted by [RedOne](#) on Tue, 09 Dec 2008 01:34:28 GMT  
[View Forum Message](#) <> [Reply to Message](#)

---

Cabal8616 wrote on Mon, 08 December 2008 18:31 Holy shit, that's TERRIBLE. Sorry, but it's just a bunch of crap thrown together. Use extrude, weld, and please, do NOT use more than 2 poly's per flat surface (It's technically two since a plane is two triangles, but yeah).

Maybe I'm wrong about the poly usage, but, show wireframe pics from gmax.

Offtopic by RedOne I know I asked for replies but holy shit your reply is terrible. Did you read the text?? There was written that i started several times again and each time a bit better. maybe just maybe you can think that I am not that long busy with this. And most important where have you learned to communicate???. If I was another type of person I could think I am totaly no good.

I have fun in what I do. When my boss talks to me like that in front of me he has a problem. That problem is me. What I trying to say is: Dont try to kick somebody into the ground, there are other ways to tell somebody that you dont like what you see. Maybe I am proud of my work and can use some tips to make it better. Gaming is for pleasure and a forum is helps me with this but not like how you start your reply

Its not a bunch of crap thrown together i think. The floors are made editable polies where I replaced the vertexes. Its one box. The wals with the windows are boxes editted with boolean. The glass wall is one mesh editted with boolean. The stairs are plains editted by replace the vertexes. There could be things that can be done better. But the best school is to do it i guess.

Di3Hard replied to me on another topic about boolean. I have to try that.

But what part you want to see in wireframe???. Then I can make a screenshot of it. Extrude and weld i am not sure if i can and how to use it. And what do you mean bij not more then 2 poly's per flatsurface??

Anyway. Thanks for the reply

GrTz Red

---

Subject: Re: Sciencepark Renegademap  
Posted by [samous](#) on Tue, 09 Dec 2008 01:43:33 GMT  
[View Forum Message](#) <> [Reply to Message](#)

---

Cabal8616 wrote on Mon, 08 December 2008 16:31 Holy shit, that's TERRIBLE. Sorry, but it's just a bunch of crap thrown together. Use extrude, weld, and please, do NOT use more than 2 poly's per flat surface (It's technically two since a plane is two triangles, but yeah).

Maybe I'm wrong about the poly usage, but, show wireframe pics from gmax.

How could you say that, it looks awesome! This looks like it will be a very well detailed map, an a really cool one at that.

=samous

-good luck finishing it

---

---

Subject: Re: Sciencepark Renegademap  
Posted by [Altzan](#) on Tue, 09 Dec 2008 01:50:28 GMT  
[View Forum Message](#) <> [Reply to Message](#)

---

samous wrote on Mon, 08 December 2008 19:43: Cabal8616 wrote on Mon, 08 December 2008 16:31: Holy shit, that's TERRIBLE. Sorry, but it's just a bunch of crap thrown together. Use extrude, weld, and please, do NOT use more than 2 poly's per flat surface (It's technically two since a plane is two triangles, but yeah).

Maybe I'm wrong about the poly usage, but, show wireframe pics from gmax.

How could you say that, it looks awesome! This looks like it will be a very well detailed map, an a really cool one at that.

=samous

-good luck finishing it

It does look nice, I agree. But Cabal is right in terms of the procedures of modeling. If you don't try to use the least amount of poly's possible it will come out laggy and large in filesize. If you can learn to model using extrude, weld, and so on, it will be harder to make but will come out ultimately much nicer in the end.

RedOne, did you check out the Advanced Gmax Tutorials at RenHelp? They explain a LOT and are very helpful.

---

---

Subject: Re: Sciencepark Renegademap  
Posted by [GEORGE ZIMMER](#) on Tue, 09 Dec 2008 02:20:05 GMT  
[View Forum Message](#) <> [Reply to Message](#)

---

RedOne wrote on Mon, 08 December 2008 19:34  
I know I asked for replies but holy shit your reply is terrible. Did you read the text?? There was written that i started several times again and each time a bit better. maybe just maybe you can think that I am not that long busy with this. And most important where have you learned to communicate??? If I was another type of person I could think I am totaly no good. Perhaps I could have worded it better, but it's the internet. When you post your work, expect criticism of any kind.

RedOne wrote on Mon, 08 December 2008 19:34Its not a bunch of crap thrown together i think. The floors are made editable polies where I replaced the vertexes. Its one box. The wals with the windows are boxes editted with boolean. The glass wall is one mesh editted with boolean. The stairs are plains editted by replace the vertexes. There could be things that can be done better. But the best school is to do it i guess.

You started on the exterior first, and it's fairly blocky. Not to mention, you shouldn't even really be texturing it atall or anything until the model is pretty much finished. I'll go into this later

RedOne wrote on Mon, 08 December 2008 19:34Di3Hard replied to me on another topic about boolean. I have to try that.

Don't. Boolean isn't really a great tool, as it makes poly's in random places. I reccomend simply extruding around where you want the holes, rather than using boolean. It really does look better, even if a bit more time consuming. Do note that polygons affect lighting. So if you have random poly's around the map, they'll show with lighting.

RedOne wrote on Mon, 08 December 2008 19:34But what part you want to see in wireframe??? Then I can make a screenshot of it. Extrude and weld i am not sure if i can and how to use it. And what do you mean bij not more then 2 poly's per flatsurface??

Take various screenshots of the map. Maybe not even necessarily in wireframe, but hit F4 (Or F2, I can't remember which, lol) in gmax, and it'll show the edges of your mesh.

Now, I should probably give you a little tutorial on how those features work.

Extrude is pretty simple. Select an edge in edge selection mode with an editable mesh. Then, simply hold shift, and drag the edge you selected in the direction you wish to make another plane.

Welding is done in vertex editing mode. You basically select various vertexes, and go down to the welding feature in gmax. Then, there should be a button called "Selection", and some numbers next to it. The numbers mean how close the vertexes must be to weld them, so I recommend choosing a really small number, like 0.001. This way, the vertexes have to be in the same location to weld them.

Welding basically means, two or more vertexes become one vertex.

Blazea's tutorials on renhelp should explain extruding and welding and other nifty features better. Here's the links.

<http://renhelp.net/index.php?mod=Tutorials&action=view&id=120>

<http://renhelp.net/index.php?mod=Tutorials&action=view&id=121>

IMO, welding and extruding are two basic necessities everyone who does 3d editing should know.

---

---

Subject: Re: Sciencepark Renegademap  
Posted by [Altzan](#) on Tue, 09 Dec 2008 03:25:55 GMT

[View Forum Message](#) <> [Reply to Message](#)

---

RedOne, don't get discouraged. You have skill. Just work to learn new ways and techniques, do your best, and there's no limit to what you can model

---

---

Subject: Re: Sciencepark Renegademap  
Posted by [RedOne](#) on Tue, 09 Dec 2008 07:02:17 GMT  
[View Forum Message](#) <> [Reply to Message](#)

---

Hi there thanx for your replies.

I have to go to work now but when I am back I will read them carefully and give my answer. I hope to learn something out of it where I can.

GrTz Red

---

---

Subject: Re: Sciencepark Renegademap  
Posted by [RedOne](#) on Tue, 09 Dec 2008 16:20:22 GMT  
[View Forum Message](#) <> [Reply to Message](#)

---

Quote:How could you say that, it looks awesome! This looks like it will be a verry well detailed map, an a really cool one at that.

=samous

-good luck finishing it

Thx. I will need it I guess:) I read a lot of hints under your reply. I can use them.

GrTz Red

---

---

Subject: Re: Sciencepark Renegademap  
Posted by [ErroR](#) on Tue, 09 Dec 2008 16:30:51 GMT  
[View Forum Message](#) <> [Reply to Message](#)

---

i think you should try using google sketch up since it's used in more architectural purposes, and it can export 3ds which can be imported with gmax

---

---

Subject: Re: Sciencepark Renegademap  
Posted by [RedOne](#) on Tue, 09 Dec 2008 16:32:23 GMT  
[View Forum Message](#) <> [Reply to Message](#)

---

Quote:It does look nice, I agree. But Cabal is right in terms of the procedures of modeling. If you don't try to use the least amount of poly's possible it will come out laggy and large in filesize. If you can learn to model using extrude, weld, and so on, it will be harder to make but will come out ultimately much nicer in the end.

He can be right thats something I wont start a discusion about. Yesterdayevening after his reply I looked back in my files and found where he was talking about i think. But I am kind of a beginner so its a bit new to me. I restarted a few times to do it differtent so my filesize get less high.

Quote:RedOne, did you check out the Advanced Gmax Tutorials at RenHelp? They explain a LOT and are very helpful.

I learned a by using the RenHelp. I shall read that one. only you talk about things that is already new for me like welding. And I am thinking about how to use extrude in the map.

Thx

GrTz Rene

---

---

Subject: Re: Sciencepark Renegademap  
Posted by [RedOne](#) on Tue, 09 Dec 2008 16:55:12 GMT  
[View Forum Message](#) <> [Reply to Message](#)

---

Quote:Perhaps I could have worded it better, but it's the internet. When you post your work, expect criticism of any kind.

I am thankful for your reply and I expected criticism of any kind but the way you started your reply was not very nice. Later in the reply you proofed dat you can be nice and tell me where I go wrong in a way that I can do someting with it.

Quote:You started on the exterior first, and it's fairly blocky. Not to mention, you shouldn't even really be texturing it atall or anything until the model is pretty much finished. I'll go into this later Yes I did started on the exterior. But the building is very blocky. And what you say about texturing is right to. I have the same experience now. But sometime I had to look if it was the right texture. Thats why I didnt textured the most of it.

Quote:Don't. Boolean isn't really a great tool, as it makes poly's in random places. I reccomend simply extruding around where you want the holes, rather than using boolean. It really does look better, even if a bit more time consuming. Do note that polygons affect lighting. So if you have random poly's around the map, they'll show with lighting..

Thats what i have seen to. In the part I did with boolean I get crazy of the poly's it added. That what I checked yesterday after your reply. I cant send some scrshot now because I am not at home now. When I am I will.

Quote:Take various screenshots of the map. Maybe not even necessarily in wireframe, but hit F4 (Or F2, I can't remember which, lol) in gmax, and it'll show the edges of your mesh

I will when I am at home

Quote:

Now, I should probably give you a little tutorial on how those features work.

Quote:

Extrude is pretty simple. Select an edge in edge selection mode with an editable mesh. Then, simply hold shift, and drag the edge you selected in the direction you wish to make another plane.

Can I use keyboardinput on this?? I get my maesurements from a autocadfile.

Quote:Welding is done in vertex editing mode. You basically select various vertexes, and go down to the welding feature in gmax. Then, there should be a button called "Selection", and some numbers next to it. The numbers mean how close the vertexes must be to weld them, so I recommend choosing a really small number, like 0.001. This way, the vertexes have to be in the same location to weld them.

Welding basically means, two or more vertexes become one vertex.

Blazea's tutorials on renhelp should explain extruding and welding and other nifty features better. Here's the links.

<http://renhelp.net/index.php?mod=Tutorials&action=view&id=120>

<http://renhelp.net/index.php?mod=Tutorials&action=view&id=121>

IMO, welding and extruding are two basic necessities everyone who does 3d editing should know.

Thx for this very much. Its more logical to me now. I shall try it very very soon. Is there a opposite of welding to. If I have a box of a plane and I want to add a vertex??

Thx again

GrTz Red

---

Subject: Re: Sciencepark Renegademap  
Posted by [RedOne](#) on Tue, 09 Dec 2008 16:57:42 GMT  
[View Forum Message](#) <> [Reply to Message](#)

---

ErroR wrote on Tue, 09 December 2008 11:30i think you should try using google sketch up since it's used in more architectural purposes, and it can export 3ds which can be imported with gmax

Thx I will

GrTz Rene

---

---

Subject: Re: Sciencepark Renegademap  
Posted by [RedOne](#) on Tue, 09 Dec 2008 16:59:41 GMT  
[View Forum Message](#) <> [Reply to Message](#)

---

Altzan wrote on Mon, 08 December 2008 21:25RedOne, don't get discouraged. You have skill. Just work to learn new ways and techniques, do your best, and there's no limit to what you can model

Thx Altzan. I will try. I get in this topic that much info that my head is turning upsidedown

GrTz Rene

---

---

Subject: Re: Sciencepark Renegademap  
Posted by [R315r4z0r](#) on Tue, 09 Dec 2008 18:57:23 GMT  
[View Forum Message](#) <> [Reply to Message](#)

---

Any small flat surface, you don't want more than 2 or 3 polys because too many will result in pointless amounts of processing that just lags the game.

However, large flat surfaces (like ceilings, floors, ground, ect) require a lot more polys to look good, even if it is completely flat. The reason being is that you wont be able to do any vertex lighting or have any fog on your map.

Fog and lighting works on a per-vertex basis. The more polys (and vertexes) you have, the better looking and more accurate the lighting and fog spread will be. If you barely have any polys, it will end up looking horrible.

---

---

Subject: Re: Sciencepark Renegademap  
Posted by [RedOne](#) on Tue, 09 Dec 2008 20:57:06 GMT  
[View Forum Message](#) <> [Reply to Message](#)

---

R315r4z0r wrote on Tue, 09 December 2008 12:57Any small flat surface, you don't want more than 2 or 3 polys because too many will result in pointless amounts of processing that just lags the game.

However, large flat surfaces (like ceilings, floors, ground, ect) require a lot more polys to look good, even if it is completely flat. The reason being is that you wont be able to do any vertex

lighting or have any fog on your map.

Fog and lighting works on a per-vertex basis. The more polys (and vertexes) you have, the better looking and more accurate the lighting and fog spread will be. If you barely have any polys, it will end up looking horrible.

When do I know if i have 2 or 3 poly's?? The floors I made was 1 small and long box. I converted to edit.ply. And with the vertexes I made it this shape because i needed this shape. Every corner i needed 2 vertexes en because it was a box i needed 4 vertexes. I cant do less vertexes. But was it beter here to make a plane and do extrude??

I made a model and in the replies it seems i did it not very logical. And thats ok i kope to learne to make it better.

I made some screenshots in gmax (however since this afternoon i have 3ds max . I wil reply with the screenshots.

Thx for reply

GrTz Red

---

Subject: Re: Sciencepark Renegademap  
Posted by [RedOne](#) on Tue, 09 Dec 2008 21:07:22 GMT  
[View Forum Message](#) <> [Reply to Message](#)

---

I was asked to post some screenshots from gmax. I did it with F4 <grin> I hope this is what you want to see.

The most important pieces are the floors (grey). Here I made a box and converted to poly. With the vertexes I shaped it. With help of keyboard input. The holes for stairs were made with boolean.

The wall with windows and indeed Cabal. Lots of poly's!.

Next the stairs. Also a edit. Poly only with a plane. By keyboard input replaced the vertexes to get this shape.

And the glass wall. Was a box. With boolean I made it like this. It is one box.

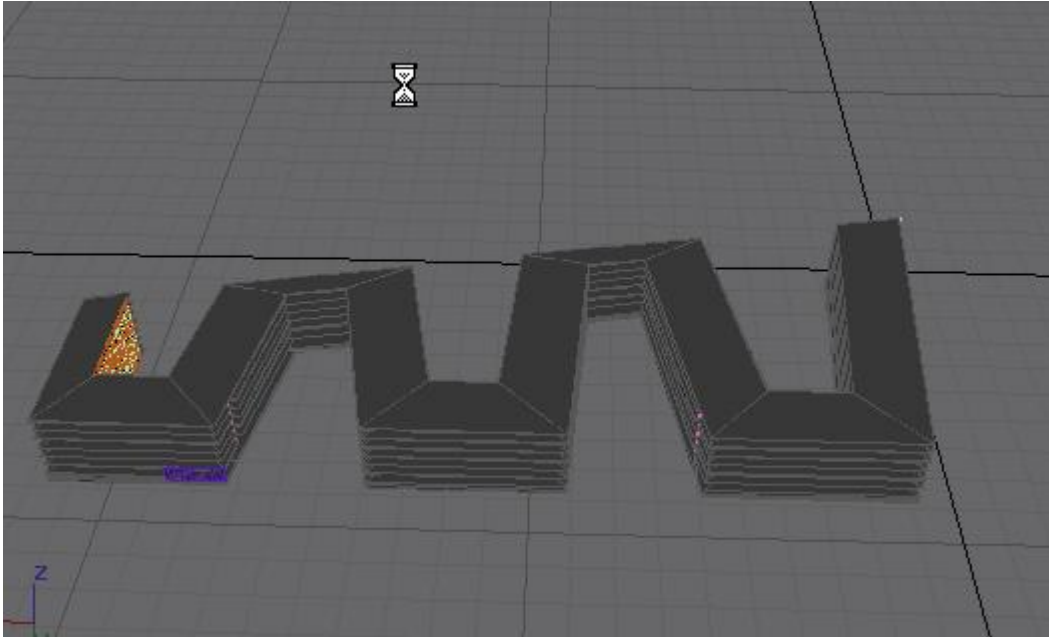
I hope Cabal this what you wanted\

GrTz Red

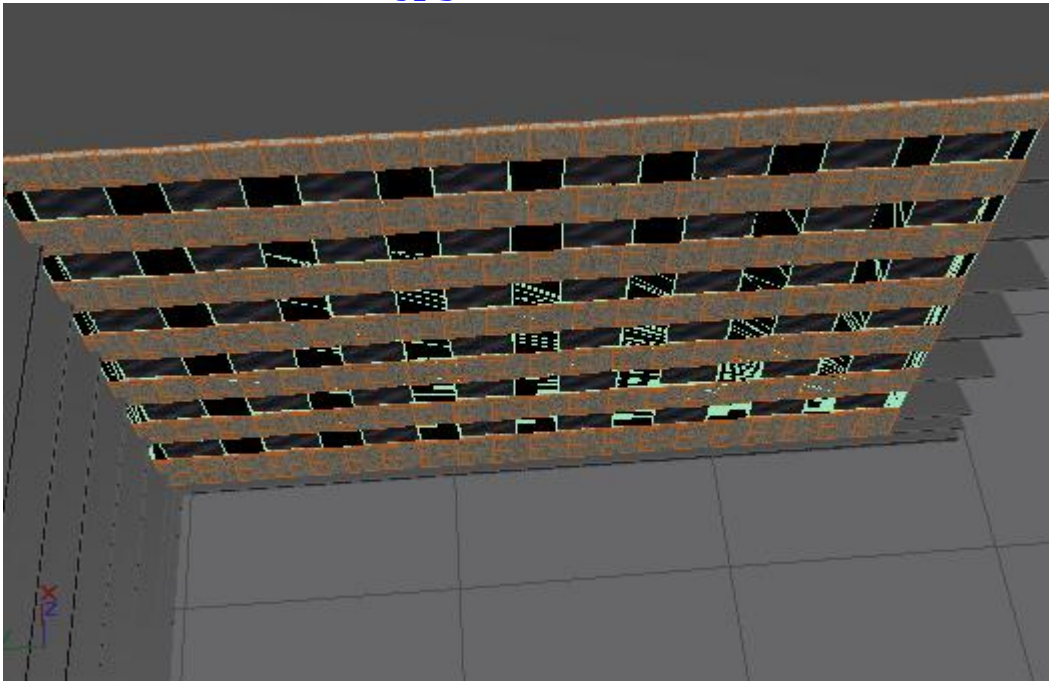
## File Attachments

---

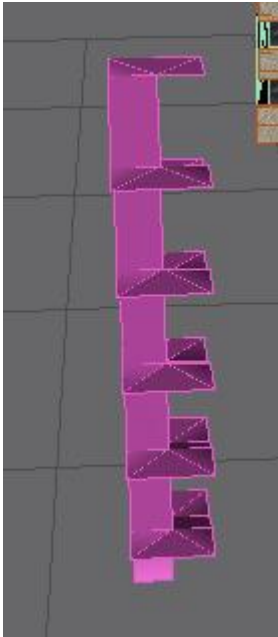
1) [ScreenShot006.jpg](#), downloaded 854 times



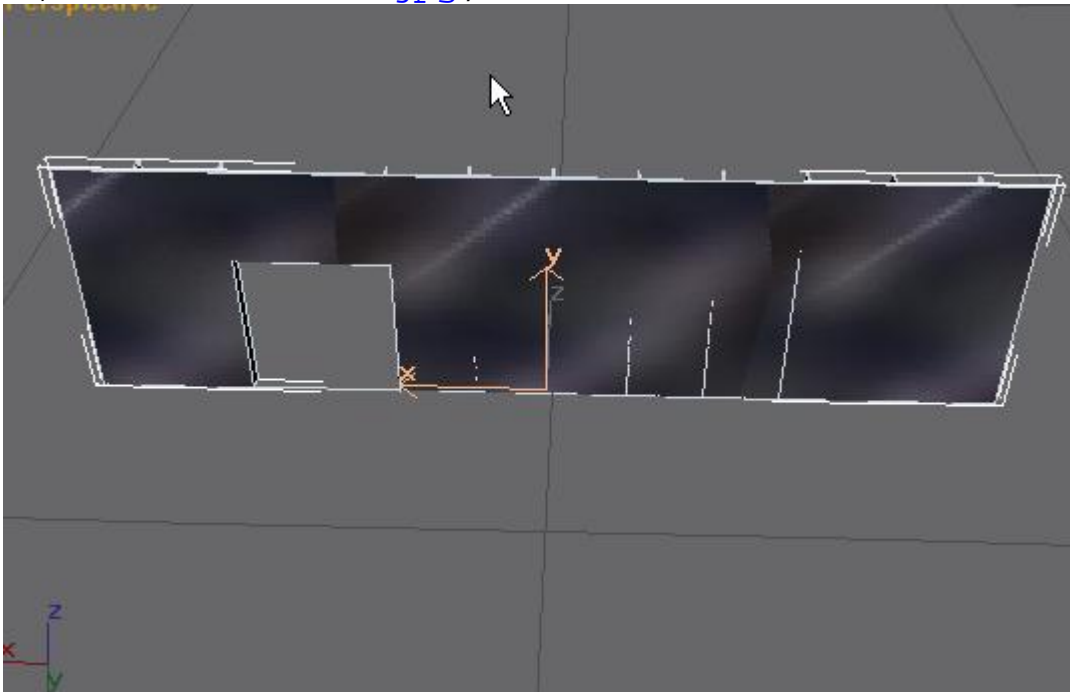
2) [ScreenShot007.jpg](#), downloaded 854 times



3) [ScreenShot008.jpg](#), downloaded 871 times



4) [ScreenShot009.jpg](#), downloaded 875 times



---

Subject: Re: Sciencepark Renegademap  
Posted by [Altzan](#) on Tue, 09 Dec 2008 21:39:05 GMT  
[View Forum Message](#) <> [Reply to Message](#)

He wanted them in wireframe mode.

In the view window, the corner where it says Top, Side, User, Perspective, (Whatever it says), right click on that word and choose wireframe.

---

Subject: Re: Sciencepark Renegademap  
Posted by [MGamer](#) on Tue, 09 Dec 2008 21:58:14 GMT  
[View Forum Message](#) <> [Reply to Message](#)

---

Just post the poly count...

---

Subject: Re: Sciencepark Renegademap  
Posted by [RedOne](#) on Tue, 09 Dec 2008 22:19:38 GMT  
[View Forum Message](#) <> [Reply to Message](#)

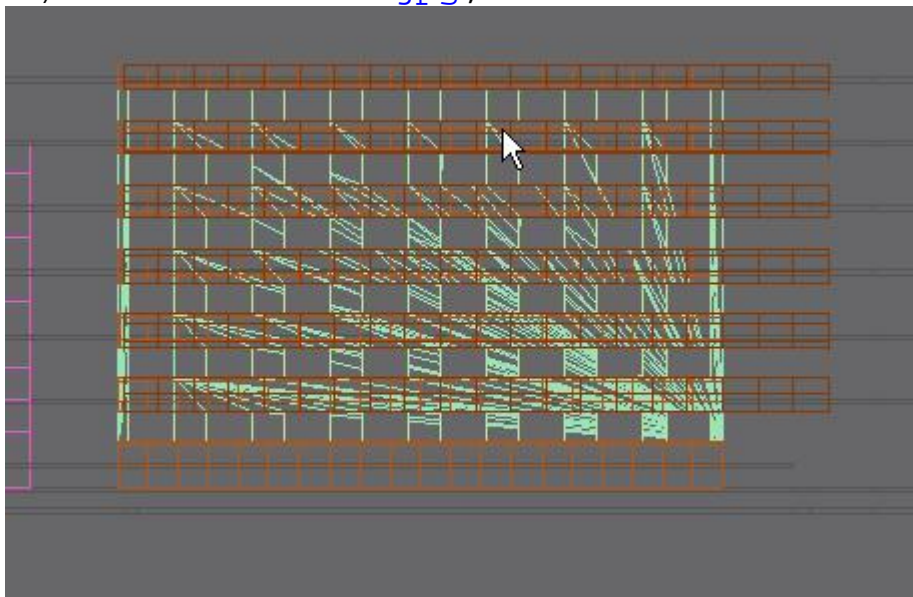
---

like this???

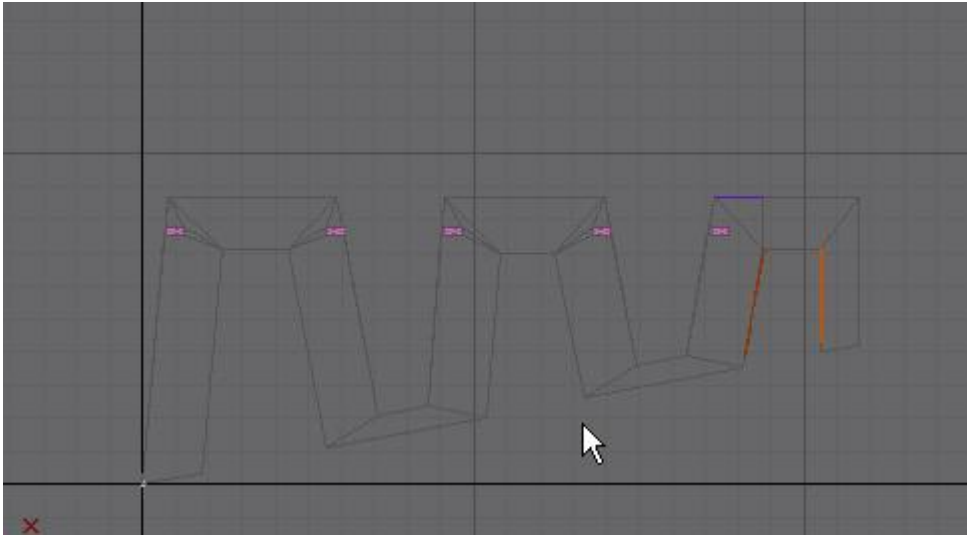
### File Attachments

---

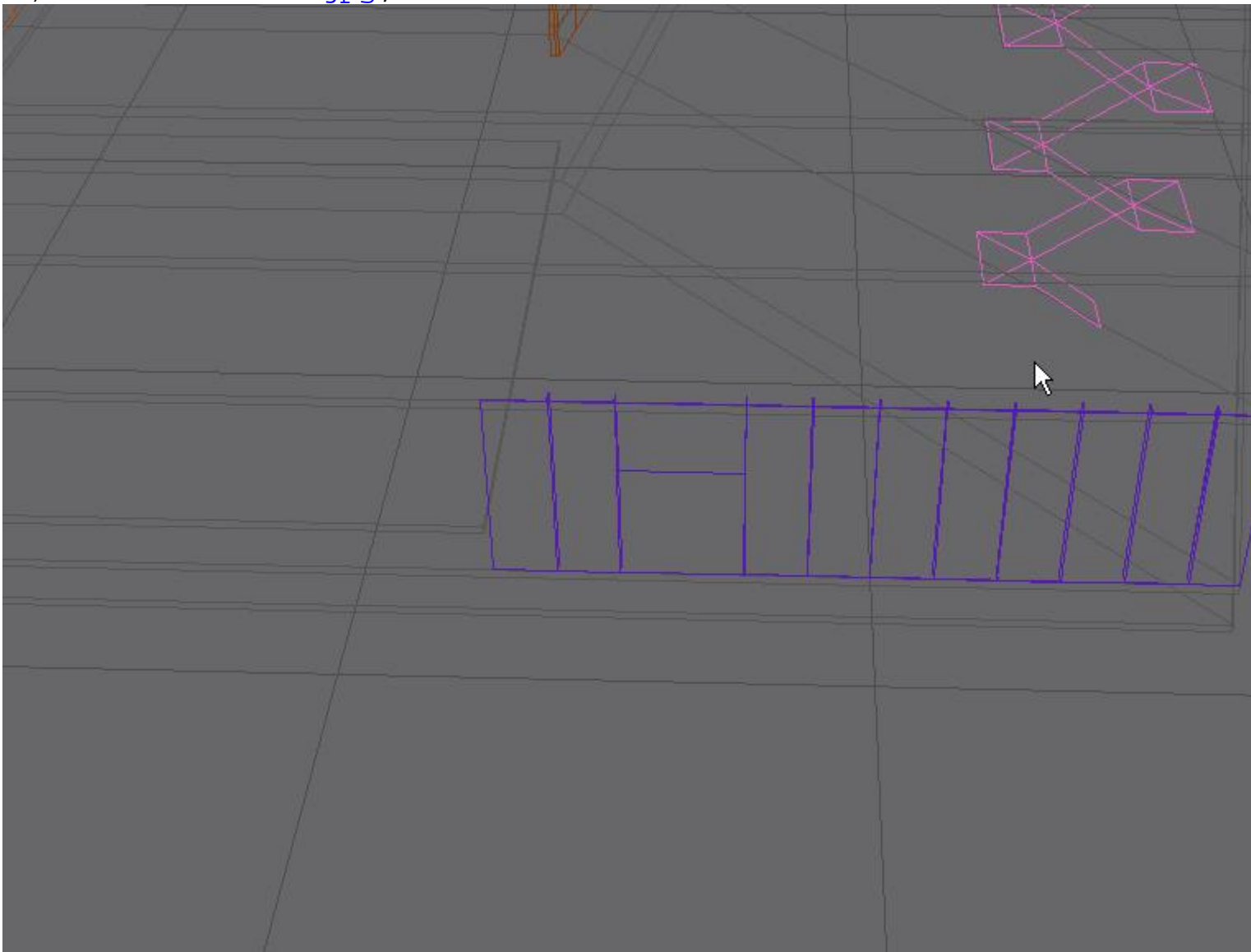
1) [ScreenShot010.jpg](#), downloaded 855 times



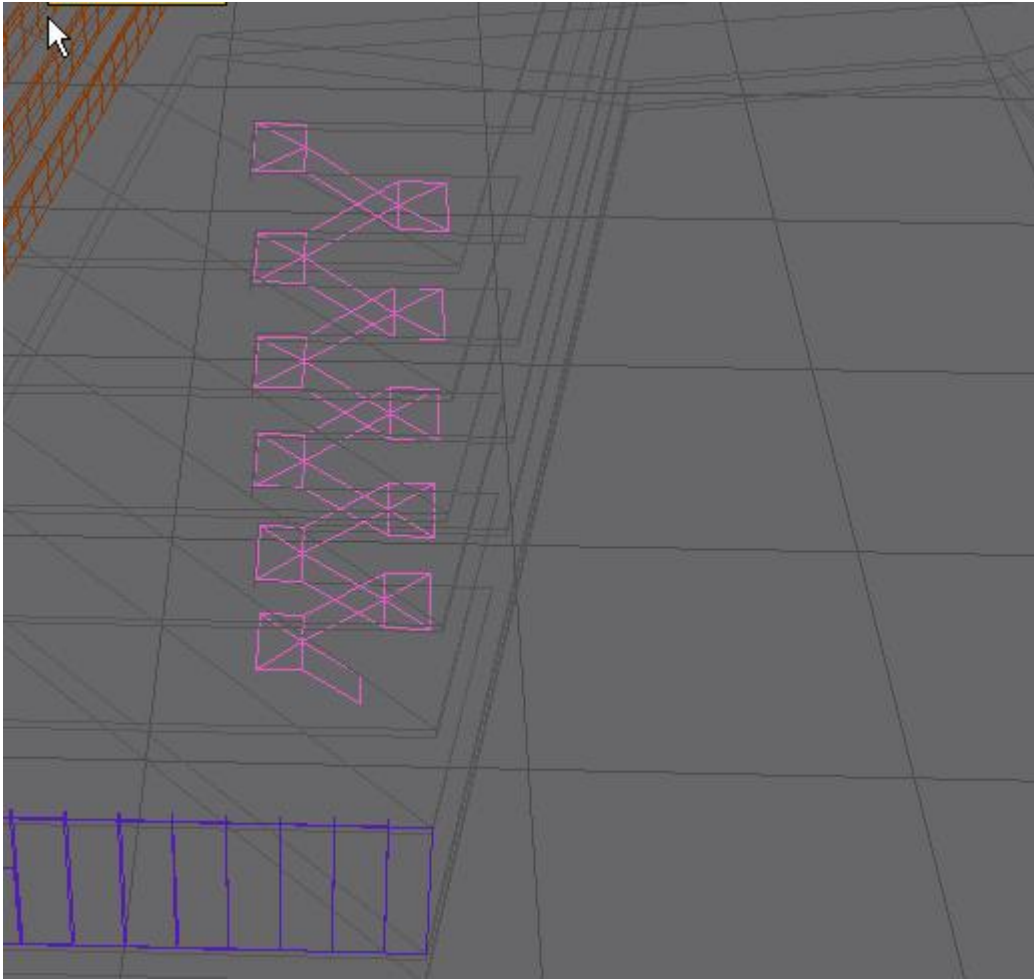
2) [ScreenShot011.jpg](#), downloaded 857 times



3) [ScreenShot012.jpg](#), downloaded 875 times



4) [ScreenShot013.jpg](#), downloaded 844 times



---

Subject: Re: Sciencepark Renegademap  
Posted by [RedOne](#) on Tue, 09 Dec 2008 22:27:35 GMT  
[View Forum Message](#) <> [Reply to Message](#)

---

MGamer wrote on Tue, 09 December 2008 15:58Just post the poly count....

???

How?? cant find

GrTz Red

---

Subject: Re: Sciencepark Renegademap  
Posted by [Altzan](#) on Tue, 09 Dec 2008 23:10:36 GMT  
[View Forum Message](#) <> [Reply to Message](#)

RedOne wrote on Tue, 09 December 2008 17:19

like this???

Correct

I don't know how to see poly count either

---

---

Subject: Re: Sciencepark Renegademap  
Posted by [Reaver11](#) on Tue, 09 Dec 2008 23:34:11 GMT  
[View Forum Message](#) <> [Reply to Message](#)

---

In renx goto the hammer and click polycounter (I think it is the same for 3ds im not sure)

---

---

Subject: Re: Sciencepark Renegademap  
Posted by [RedOne](#) on Wed, 10 Dec 2008 15:29:33 GMT  
[View Forum Message](#) <> [Reply to Message](#)

---

Reaver11 wrote on Tue, 09 December 2008 17:34In renx goto the hammer and click polycounter (I think it is the same for 3ds im not sure)

Like this i guess,

thx for explaining

Grtz Red

### File Attachments

1) [ScreenShot014.jpg](#), downloaded 809 times



Subject: Re: Sciencepark Renegademap  
Posted by [Reaver11](#) on Wed, 10 Dec 2008 15:32:27 GMT  
[View Forum Message](#) <> [Reply to Message](#)

---

Yep you have 6031 polys and 0 selected atm. (if you select a object and then check the poly counter it will show it in the above thingy. you can also select multiple)

---