
Subject: Unable to install

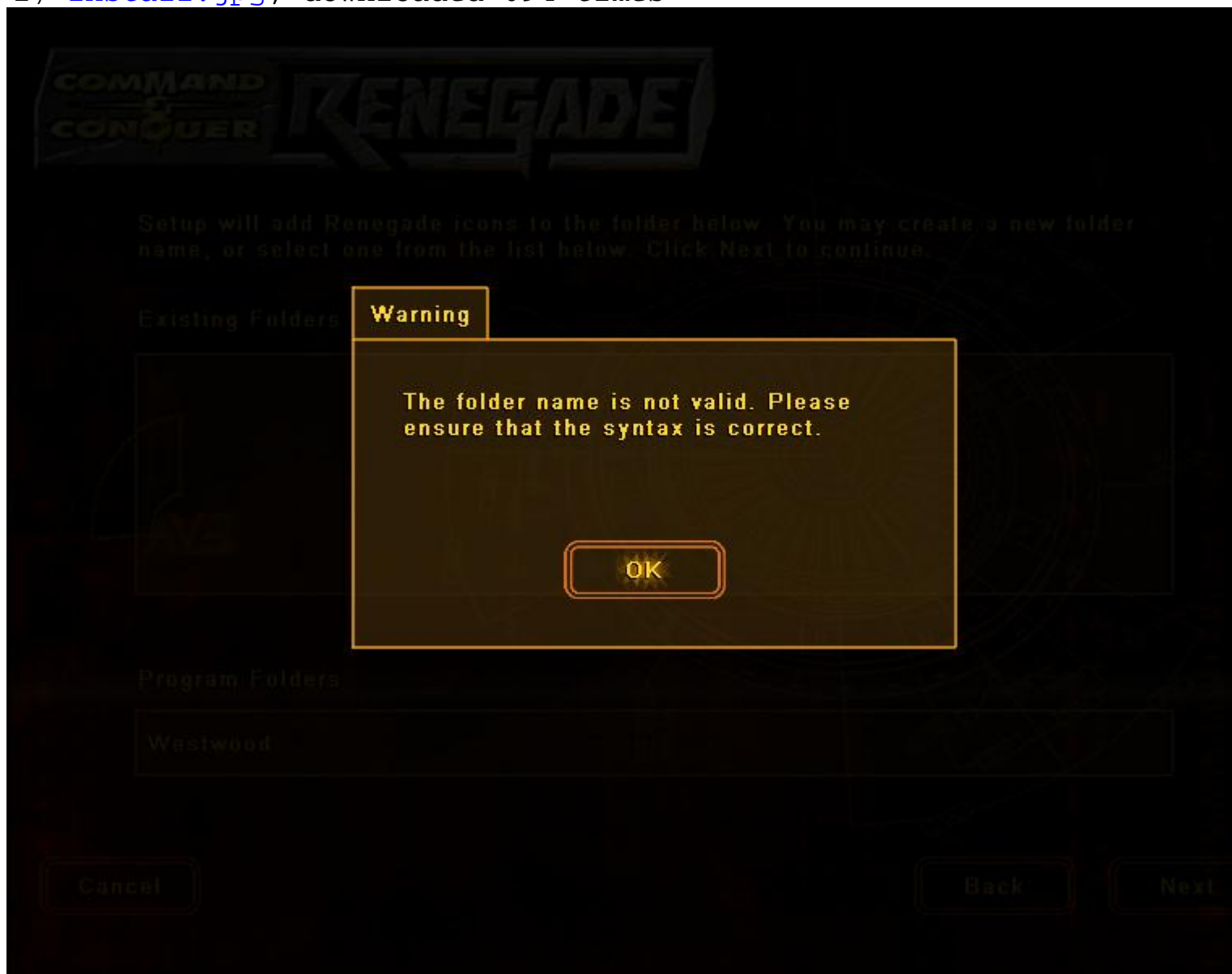
Posted by [iiSHOTii](#) on Tue, 20 Jan 2009 01:36:24 GMT

[View Forum Message](#) <> [Reply to Message](#)

I was wondering if anyone has seen this problem. I keep getting "Folder name is not valid..." when it comes to where to put it in the start menu. Any ideas?

File Attachments

1) [install.jpg](#), downloaded 694 times



Subject: Re: Unable to install

Posted by [luv2pb](#) on Tue, 20 Jan 2009 07:42:47 GMT

[View Forum Message](#) <> [Reply to Message](#)

Try adding the folder "Westwood" manually or naming it something different like "iishotii likes men".

Subject: Re: Unable to install
Posted by [CarrierII](#) on Tue, 20 Jan 2009 18:18:14 GMT
[View Forum Message](#) <> [Reply to Message](#)

Running Vista?

Run setup in admin mode.

Really stupid complex explanation for this, I imagine.

Subject: Re: Unable to install
Posted by [iiSHOTii](#) on Tue, 20 Jan 2009 22:14:21 GMT
[View Forum Message](#) <> [Reply to Message](#)

I tried doing all of that. I tried running under admin. I also tried running under XP mode. I tried running in safe mode which didn't do anything at all. And I also tried creating all the folders myself.

Subject: Re: Unable to install
Posted by [danpaul88](#) on Wed, 21 Jan 2009 09:27:31 GMT
[View Forum Message](#) <> [Reply to Message](#)

Set it not to create a start menu folder and manually create a shortcut yourself? Doesn't explain why it's not working, but could be a workaround.

Subject: Re: Unable to install
Posted by [iiSHOTii](#) on Wed, 21 Jan 2009 22:40:03 GMT
[View Forum Message](#) <> [Reply to Message](#)

You can't set it to not create a start menu folder.

Subject: Re: Unable to install
Posted by [Spyder](#) on Thu, 22 Jan 2009 07:32:00 GMT
[View Forum Message](#) <> [Reply to Message](#)

Have you tried installing it on a different drive?

Subject: Re: Unable to install

Posted by [iiSHOTii](#) on Fri, 23 Jan 2009 02:47:41 GMT

[View Forum Message](#) <> [Reply to Message](#)

you can't install the start menu icons on a different drive.....

Subject: Re: Unable to install

Posted by [Spyder](#) on Fri, 23 Jan 2009 08:10:50 GMT

[View Forum Message](#) <> [Reply to Message](#)

If you can't install the start menu icons, try this:

Go to C:\Users\<<yourname>\AppData\Roaming\Microsoft\Windows\Start Menu\Programs

If that folder doesn't exist, you've already found the problem, but I doubt it.

Then right click the programs folder and go to "Security", make sure you set your user account policies to "Full Rights". Then try running the setup again.

Subject: Re: Unable to install

Posted by [iiSHOTii](#) on Mon, 26 Jan 2009 22:24:38 GMT

[View Forum Message](#) <> [Reply to Message](#)

I figured it out. I had to right click on "Programs" folder and move it to C:\Programs. So now all my shortcuts are there. And then it worked fine..

So that was pretty easy
