
Subject: [Model] Cybran T2 Heavy Tank: Rhino
Posted by [Slave](#) on Sun, 25 Jan 2009 00:06:55 GMT
[View Forum Message](#) <> [Reply to Message](#)

Quote:=====

Supreme Commander Replica
Cybran T2 Heavy Tank: Rhino
Version 1.0
=====

The Cybran T2 Heavy Tank, nicknamed the Rhino, is a Supreme Commander unit.
This is a direct fire unit that is armed with a dual Laser Cannon.

Provided in this package is a recreation of this unit, in the w3d format.

Enjoy.

=====
USAGE:
=====

Feel free to abuse this model for whatever purpose you please.
Coloring information is not stored in the w3d files, but purely in the textures.
This allows for easy re-coloring to whatever color you want. One might suggest pink.

=====
DISCLAIMER:
=====

Permission to distribute this package is granted only to www.renxtreme.info and
www.renegadeforums.com

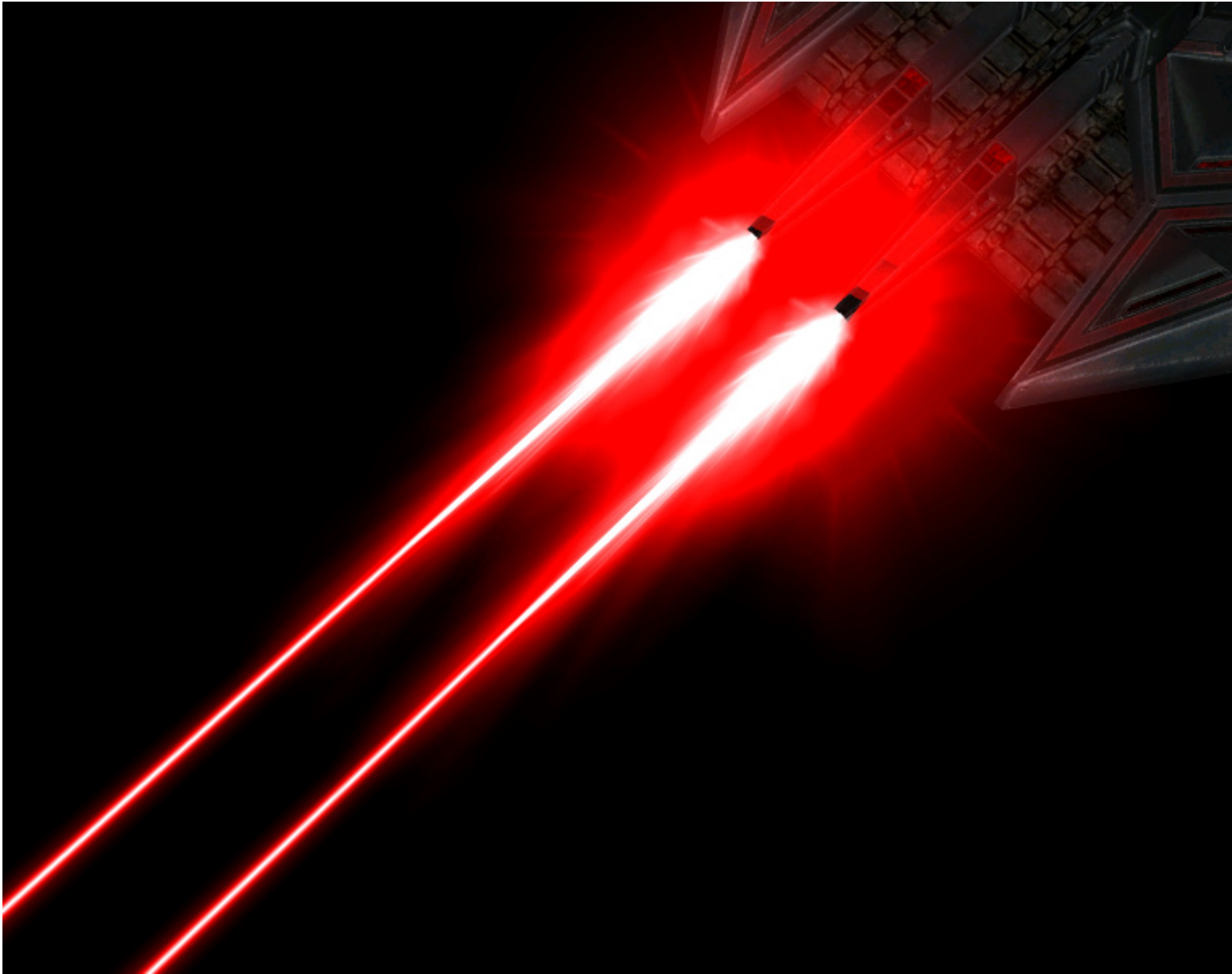
This product is distributed as is and shall not be held liable for the results of improper or proper usage in case this usage results in problems, included, but not limited to; damage, poisoning, terror attacks, vomit on floor, worm in apple, virus in any place, windows in doors, non-working or partially defect breakes, power outage or empty swimming pools.

=====
CREDITS:
=====

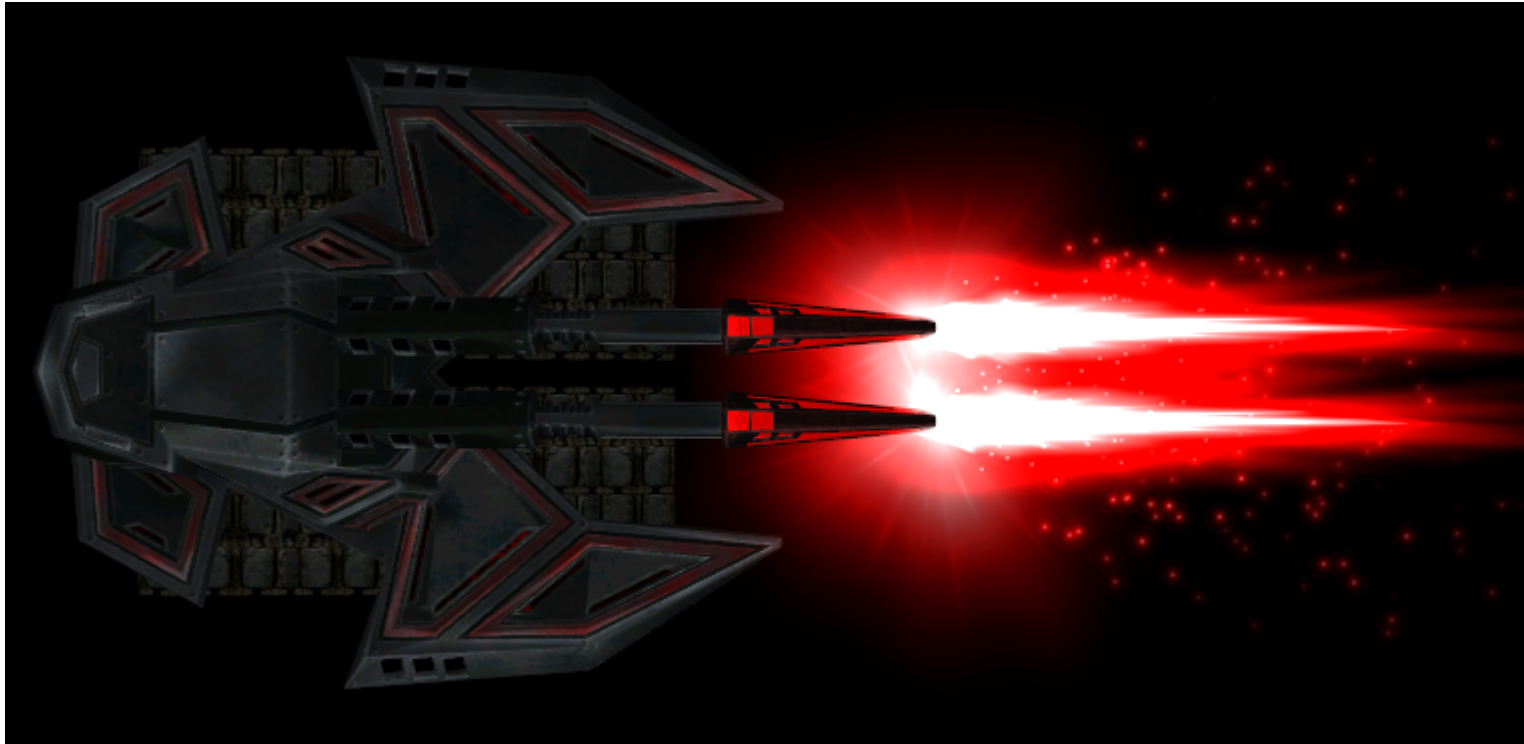
Slave : Creator of this package
THQ & GPG : Creating Supreme Commander
RxD : Motivation and support from it's userbase

File Attachments

1) [pyewpyew.jpg](#), downloaded 715 times



- 2) [mz_v_rxd_rhino.gmax](#), downloaded 230 times
- 3) [v_rxd_rhino.gmax](#), downloaded 196 times
- 4) [rxd_rhino_final.zip](#), downloaded 299 times
- 5) [screenshot.png](#), downloaded 1580 times



Subject: Re: [Model] Cybran T2 Heavy Tank: Rhino
Posted by [Gen_Blacky](#) on Sun, 25 Jan 2009 00:42:33 GMT
[View Forum Message](#) <> [Reply to Message](#)

I think this is Sex with extra lulz

Edit:

The video <http://files.filefront.com/Film+0002wmv/;13090199;/fileinfo.html>

Subject: Re: [Model] Cybran T2 Heavy Tank: Rhino
Posted by [slosha](#) on Sun, 25 Jan 2009 07:40:27 GMT
[View Forum Message](#) <> [Reply to Message](#)

VERY NICE!! I wish I could see it in game

Subject: Re: [Model] Cybran T2 Heavy Tank: Rhino
Posted by [ErroR](#) on Sun, 25 Jan 2009 19:19:49 GMT
[View Forum Message](#) <> [Reply to Message](#)

found a small bug, the treads spin not from up to down but from left to right

Subject: Re: [Model] Cybran T2 Heavy Tank: Rhino
Posted by [Slave](#) on Sun, 25 Jan 2009 20:08:59 GMT
[View Forum Message](#) <> [Reply to Message](#)

That's a leveledit setting. Should be easy to fix.
Try building a preset based on the light tank.
I know that should work.

(as seen in blacky's uploaded video)

Subject: Re: [Model] Cybran T2 Heavy Tank: Rhino
Posted by [_SSnipe_](#) on Sun, 25 Jan 2009 20:25:45 GMT
[View Forum Message](#) <> [Reply to Message](#)

THAT IS THE BEST FUCKING ONE IV EVER SEEN

Subject: Re: [Model] Cybran T2 Heavy Tank: Rhino
Posted by [Prulez](#) on Mon, 26 Jan 2009 15:51:26 GMT
[View Forum Message](#) <> [Reply to Message](#)

SSnipe wrote on Sun, 25 January 2009 21:25 THAT IS THE BEST FUCKING ONE IV EVER SEEN
DAMN THANKS FOR SHARING, THAT IS ONE USEFUL POST INDEED!

Subject: Re: [Model] Cybran T2 Heavy Tank: Rhino
Posted by [Di3HardNL](#) on Mon, 26 Jan 2009 16:21:13 GMT
[View Forum Message](#) <> [Reply to Message](#)

Very nice!

Subject: Re: [Model] Cybran T2 Heavy Tank: Rhino
Posted by [Slave](#) on Sun, 22 Mar 2009 02:07:19 GMT
[View Forum Message](#) <> [Reply to Message](#)

Bump.

There are gmax files now.

Subject: Re: [Model] Cybran T2 Heavy Tank: Rhino
Posted by [Zuess](#) on Sun, 22 Mar 2009 02:33:30 GMT
[View Forum Message](#) <> [Reply to Message](#)

When is there gonna be a RxD file?

Subject: Re: [Model] Cybran T2 Heavy Tank: Rhino
Posted by [Gen_Blacky](#) on Sun, 22 Mar 2009 03:29:02 GMT
[View Forum Message](#) <> [Reply to Message](#)

Who knows

Subject: Re: [Model] Cybran T2 Heavy Tank: Rhino
Posted by [Dreganius](#) on Sun, 22 Mar 2009 07:23:42 GMT
[View Forum Message](#) <> [Reply to Message](#)

I want this as my light tank.

Subject: Re: [Model] Cybran T2 Heavy Tank: Rhino
Posted by [marcin205](#) on Fri, 17 Apr 2009 17:15:34 GMT
[View Forum Message](#) <> [Reply to Message](#)

looks better mammoth tank
