
Subject: RG Connects to Malicious IP
Posted by [twig123](#) on Wed, 02 Sep 2009 21:21:00 GMT
[View Forum Message](#) <> [Reply to Message](#)

Guys,

I have Malwarebytes anti-malware software installed on my system...
Every time I start RG I get a warning that access to a malicious IP has been blocked (IP: 213.131.252.251).

What is this IP and why does RG keep trying to communicate with it?

~Dave

File Attachments

1) [RG - Infected IP.JPG](#), downloaded 1029 times



Subject: Re: RG Connects to Malicious IP
Posted by [dr3w2](#) on Thu, 03 Sep 2009 00:12:26 GMT
[View Forum Message](#) <> [Reply to Message](#)

<http://www.ip-adress.com/whois/213.131.252.251>

Thats definitely not a crimson renguard server. I'd find out what other applications you have running tbh

Subject: Re: RG Connects to Malicious IP
Posted by [dr3w2](#) on Thu, 03 Sep 2009 00:14:16 GMT
[View Forum Message](#) <> [Reply to Message](#)

<http://www.malwaredomainlist.com/mdl.php?inactive=&sort=Date&search=&colsearch=All&ascorder=ASC&quantity=100&page=98>

^^ do a ctrl-f on that IP.

You got infected yo

Subject: Re: RG Connects to Malicious IP
Posted by [twig123](#) on Thu, 03 Sep 2009 14:49:34 GMT
[View Forum Message](#) <> [Reply to Message](#)

Guys, my system is clean...

This is sourcing from game.exe (RG) trying to communicate with this IP.

Subject: Re: RG Connects to Malicious IP
Posted by [CarrierII](#) on Thu, 03 Sep 2009 16:30:01 GMT
[View Forum Message](#) <> [Reply to Message](#)

Yeah, then the Malware is simply in that EXE, along with several other EXEs on your system.

You should scan your entire system with your installed antivirus, as well as Windows Defender. If you do not have an antivirus installed, AVG antivirus has a free edition.

Subject: Re: RG Connects to Malicious IP
Posted by [twig123](#) on Thu, 03 Sep 2009 19:37:19 GMT
[View Forum Message](#) <> [Reply to Message](#)

I don't know how to make this more clear...
"my system is clean"

Subject: Re: RG Connects to Malicious IP
Posted by [CarrierII](#) on Thu, 03 Sep 2009 21:10:31 GMT
[View Forum Message](#) <> [Reply to Message](#)

Ok, we'll make this clear:

"We don't think that is the case." Please post SS of scan results to prove your point.

Subject: Re: RG Connects to Malicious IP
Posted by [twig123](#) on Fri, 04 Sep 2009 00:53:31 GMT
[View Forum Message](#) <> [Reply to Message](#)

Haha! BHS pwnd...
RenGuard_Setup_1.0323.exe - 2/41 Detections
<https://www.virustotal.com/analysis/a1443e1ca1647f9be21ae62f0547a48238101ca73617ad86f6806c9a2ed2ad17-1252025106>

and

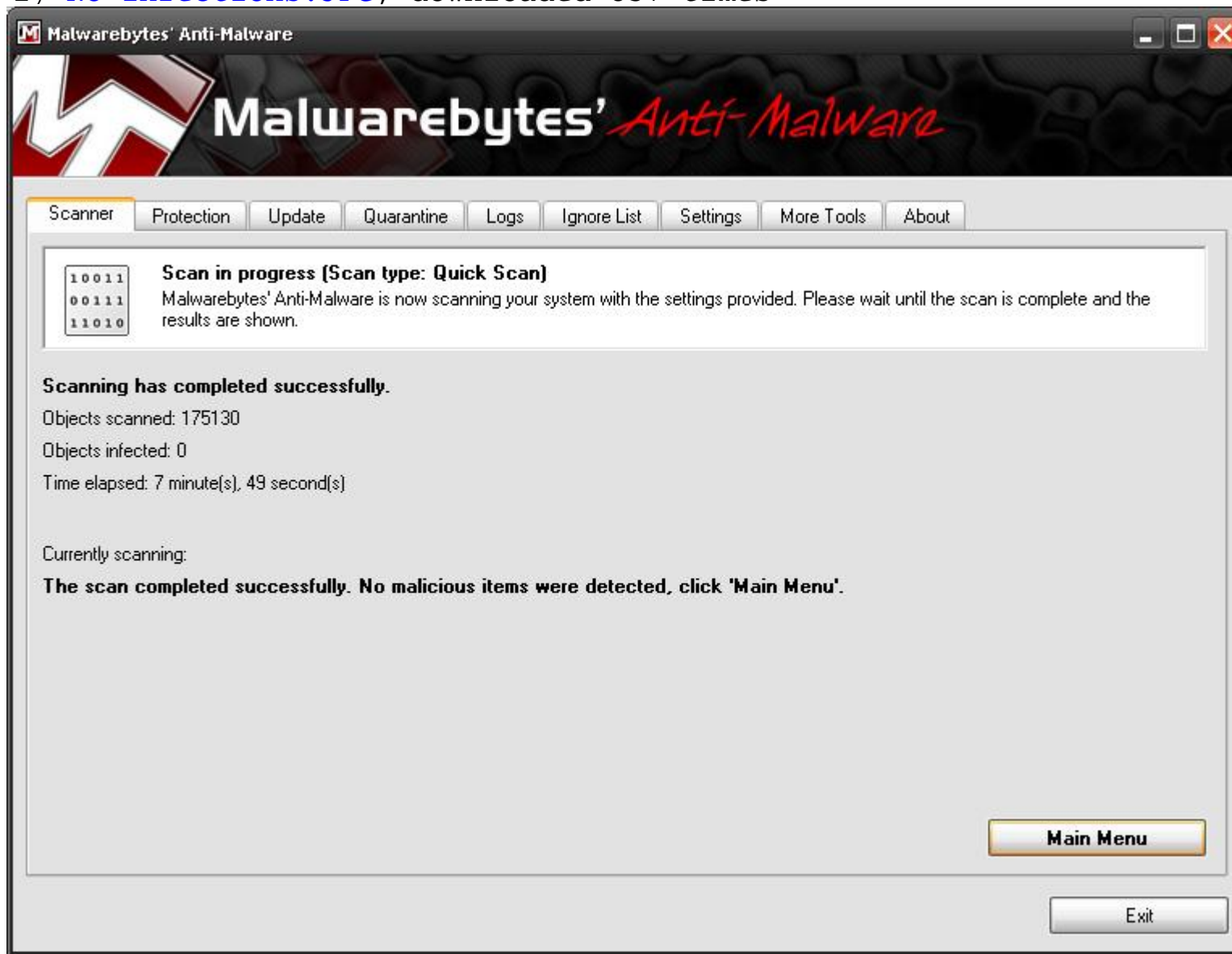
game.exe - 3/41 Detections

<https://www.virustotal.com/analysis/bb9ac3edb3977d7a74b33fbc232fdbd5d5f09c59f8099a3d7bc77bb530e9f739-1252024999>

(Check the MD5 Hashes, this was downloaded fresh and directly sent to VirusTotal)

File Attachments

1) [No Infections.JPG](#), downloaded 857 times



Subject: Re: RG Connects to Malicious IP
Posted by [Goztow](#) on Fri, 04 Sep 2009 09:57:11 GMT
[View Forum Message](#) <> [Reply to Message](#)

Renguard uses some protection measures to protect itself from reverse engineering that some

viruses also use.

Subject: Re: RG Connects to Malicious IP
Posted by [CarrierII](#) on Fri, 04 Sep 2009 11:54:49 GMT
[View Forum Message](#) <> [Reply to Message](#)

Goztow wrote on Fri, 04 September 2009 10:57Renguard uses some protection measures to protect itself from reverse engineering that some viruses also use.

I'll bet this is a repeat of the issue with Norton. Some virus used SVKP.sys to runtime-pack itself, and the virus connected to that IP, so MalwareBytes just assumes anything with SVKP is that virus, and blocks the connection "attempt" (As RG will NOT connect to that IP).

Ok - just add game.exe to your safe list.

Subject: Re: RG Connects to Malicious IP
Posted by [_SSnipe_](#) on Sat, 05 Sep 2009 22:42:29 GMT
[View Forum Message](#) <> [Reply to Message](#)

I have like 6 anti virus and some pick something up the others dont, so you still could be

Subject: Re: RG Connects to Malicious IP
Posted by [raven](#) on Mon, 07 Sep 2009 09:46:57 GMT
[View Forum Message](#) <> [Reply to Message](#)

SSnipe wrote on Sat, 05 September 2009 17:42I have like 6 anti virus

That's a bad idea.

Subject: Re: RG Connects to Malicious IP
Posted by [CarrierII](#) on Mon, 07 Sep 2009 09:54:37 GMT
[View Forum Message](#) <> [Reply to Message](#)

All of those are "Heuristic" (guess-work) or "Suspect" (looks like) results. I'll tell you why: some git made a virus that used SVKP(.sys) to protect itself, and some (very) lazy anti-virus makers added anything using SVKP(.sys) to the blacklist.

The file is safe.

Subject: Re: RG Connects to Malicious IP
Posted by [twig123](#) on Tue, 08 Sep 2009 21:12:18 GMT
[View Forum Message](#) <> [Reply to Message](#)

trying to get another SS for you guys...
