

---

Subject: Runtime error

Posted by [crysis992](#) on Wed, 03 Mar 2010 19:12:41 GMT

[View Forum Message](#) <> [Reply to Message](#)

---

Hello,

i have since few days a little problem, everytime i join a game it crashes after 1-2 min or at mapload.

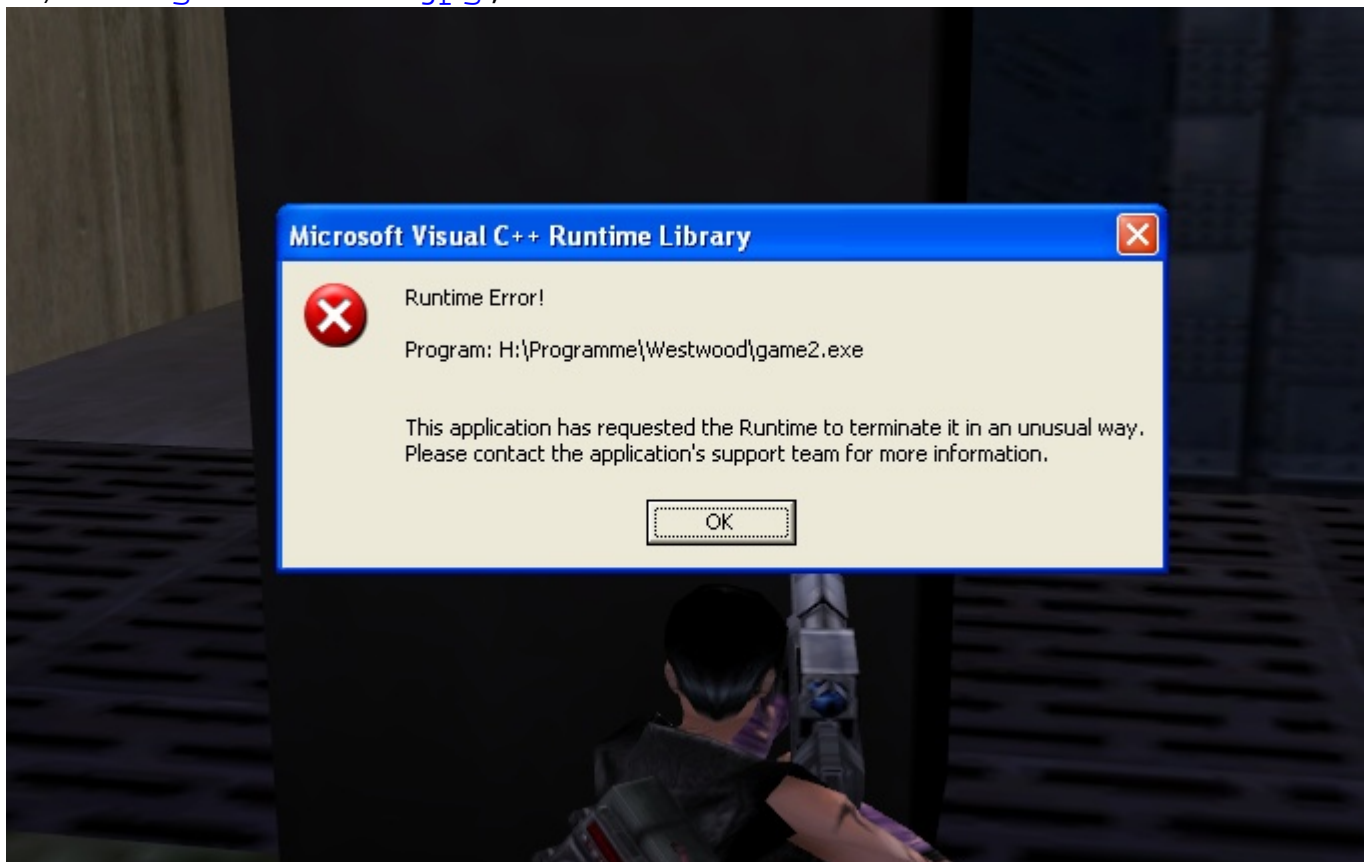
Other programmes like XCC Mixer, LevelEdit or 3DS max crash with the same error message.

Does someone know how to fix that?

---

### File Attachments

1) [Renegade error.jpg](#), downloaded 1009 times



---

Subject: Re: Runtime error

Posted by [cmatt42](#) on Wed, 03 Mar 2010 21:03:24 GMT

[View Forum Message](#) <> [Reply to Message](#)

---

I hope you're not installing all your game files in the same folder. Install them in their own folders.

---

---

Subject: Re: Runtime error  
Posted by [crisis992](#) on Wed, 03 Mar 2010 21:16:37 GMT  
[View Forum Message](#) <> [Reply to Message](#)

---

cmatt42 wrote on Wed, 03 March 2010 15:03| hope you're not installing all your game files in the same folder. Install them in their own folders.

eh what mean ya?

---

---

Subject: Re: Runtime error  
Posted by [Tupolev TU-95 Bear](#) on Sat, 06 Mar 2010 19:16:03 GMT  
[View Forum Message](#) <> [Reply to Message](#)

---

crisis992 wrote on Wed, 03 March 2010 21:16| cmatt42 wrote on Wed, 03 March 2010 15:03| hope you're not installing all your game files in the same folder. Install them in their own folders.

eh what mean ya?

I think he means that , You installed renegade in the same folder that you specified.

---

---

Subject: Re: Runtime error  
Posted by [crisis992](#) on Sun, 07 Mar 2010 12:42:08 GMT  
[View Forum Message](#) <> [Reply to Message](#)

---

... problem solved.

It was microsoft visual studio, I uninstalled it and now my ren works fine.

---