

---

Subject: Fog!

Posted by [Distrbd21](#) on Wed, 11 May 2011 23:15:11 GMT

[View Forum Message](#) <> [Reply to Message](#)

---

I'm trying to make it so the map i have is so foggy you can't see 2 feet in front of you.

How do i do this??

---

---

Subject: Re: Fog!

Posted by [Gen\\_Blacky](#) on Wed, 11 May 2011 23:41:08 GMT

[View Forum Message](#) <> [Reply to Message](#)

---

server side or client.

---

---

Subject: Re: Fog!

Posted by [Distrbd21](#) on Thu, 12 May 2011 00:46:17 GMT

[View Forum Message](#) <> [Reply to Message](#)

---

client

---

---

Subject: Re: Fog!

Posted by [Gen\\_Blacky](#) on Thu, 12 May 2011 02:54:04 GMT

[View Forum Message](#) <> [Reply to Message](#)

---

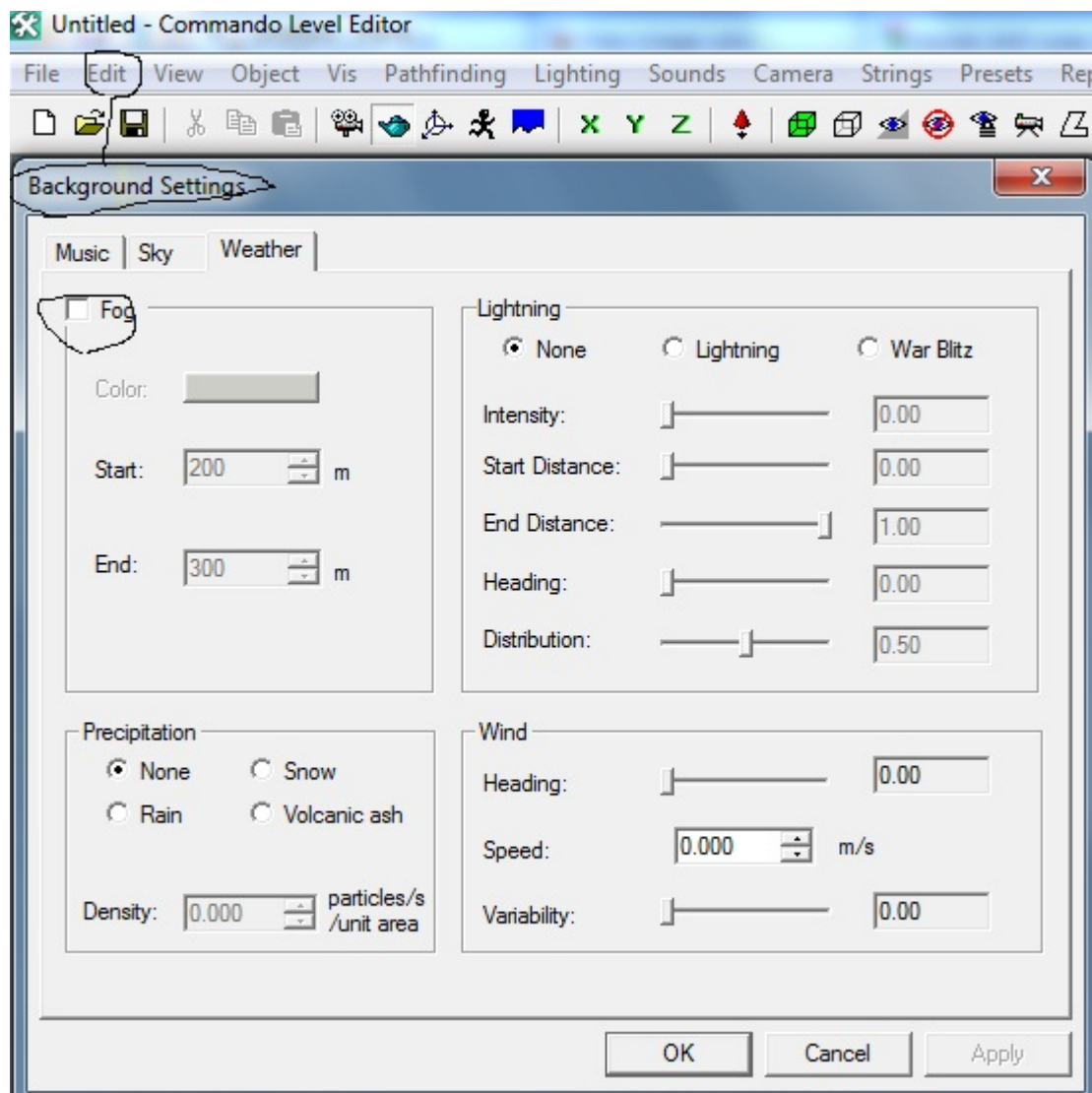
Mess around with the fog start and end distance until you get the desired results.

---

### File Attachments

1) [bg.jpg](#), downloaded 338 times

---



---

Subject: Re: Fog!

Posted by [Distrbd21](#) on Thu, 12 May 2011 03:49:51 GMT

[View Forum Message](#) <> [Reply to Message](#)

---

I have been doing that but i don't see a change in LE?

Does it not show in LE?

---

---

Subject: Re: Fog!

Posted by [Gen\\_Black](#) on Thu, 12 May 2011 04:36:47 GMT

[View Forum Message](#) <> [Reply to Message](#)

---

It does show in LE.

Top no fog

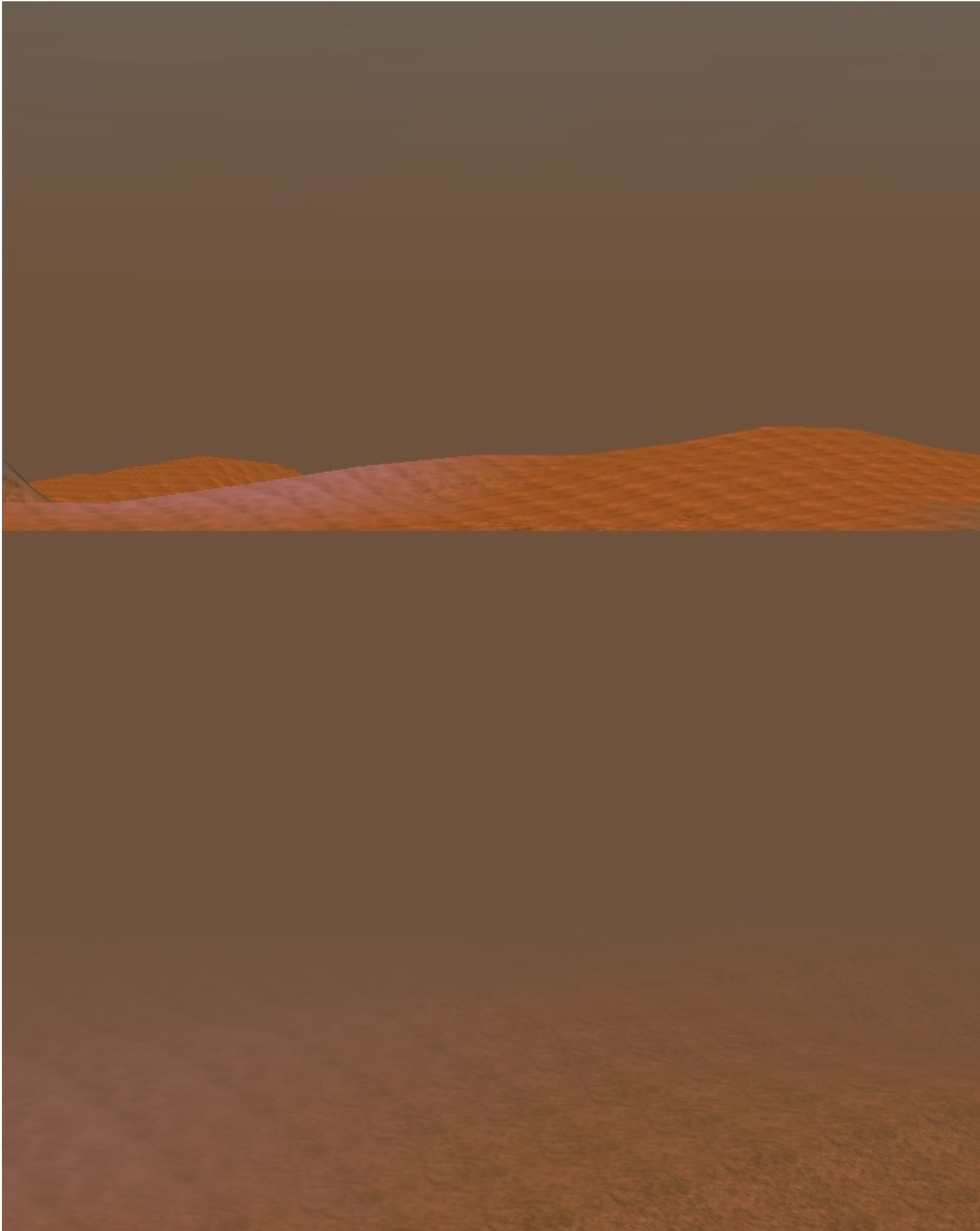
Bottom fog

start 1m  
end 100m

### File Attachments

---

1) [b.jpg](#), downloaded 322 times



Subject: Re: Fog!  
Posted by [Distrbd21](#) on Thu, 12 May 2011 05:52:26 GMT  
[View Forum Message](#) <> [Reply to Message](#)

---

but in game the map will have fog right?

Edit nvm ;p got it. ty

---

#### File Attachments

1) [untitled.JPG](#), downloaded 312 times

