

---

Subject: Fds a little help.

Posted by [Steven C.](#) on Fri, 15 Jul 2011 19:36:26 GMT

[View Forum Message](#) <> [Reply to Message](#)

---

Well. I got fds to work. I can set it to gamespy or lan. But i don't dont see my server on the list using gamespy servers. But for lan it shows. at lease on my brother's computer with the same ip. But anyway. I am also having trouble getting the console commands. I cant find how to kick someone.

I try

kick 1

kick <player>

kick [1]

kick\_1

kick 1 <player>

kick <player> 1

kick <player> [1]

kick id 1

I cant ban or do anything, I need help with the console commands too. I know im an idiot stupid and brain damaged but i need help with that

---

---

Subject: Re: Fds a little help.

Posted by [Lone0001](#) on Fri, 15 Jul 2011 19:47:30 GMT

[View Forum Message](#) <> [Reply to Message](#)

---

With gamespy servers you can't see the server if you're on the same ip the server is on.

To kick or ban someone using the console you need to know the player's id, using the command "id <playername>" to find out what their id number is or just "id" should work too, the command "player\_info" should also tell you (all commands without quotes of course).

The attached file should help you find out what each command does, some of them won't work as you need a more up to date version of Scripts on your server or SSGM as it comes with a more up to date version.

### File Attachments

1) [bhs.txt](#), downloaded 451 times

---

---

Subject: Re: Fds a little help.

Posted by [Steven C.](#) on Fri, 15 Jul 2011 20:33:55 GMT

[View Forum Message](#) <> [Reply to Message](#)

---

I cant find it in the file can you tell me here.



Subject: Re: Fds a little help.  
Posted by [Omar007](#) on Fri, 15 Jul 2011 22:50:23 GMT  
[View Forum Message](#) <> [Reply to Message](#)

---

use the +multi commandline parameter

---

Subject: Re: Fds a little help.  
Posted by [Gen\\_Blacky](#) on Fri, 15 Jul 2011 22:54:43 GMT  
[View Forum Message](#) <> [Reply to Message](#)

---

use +multi when running renegade.

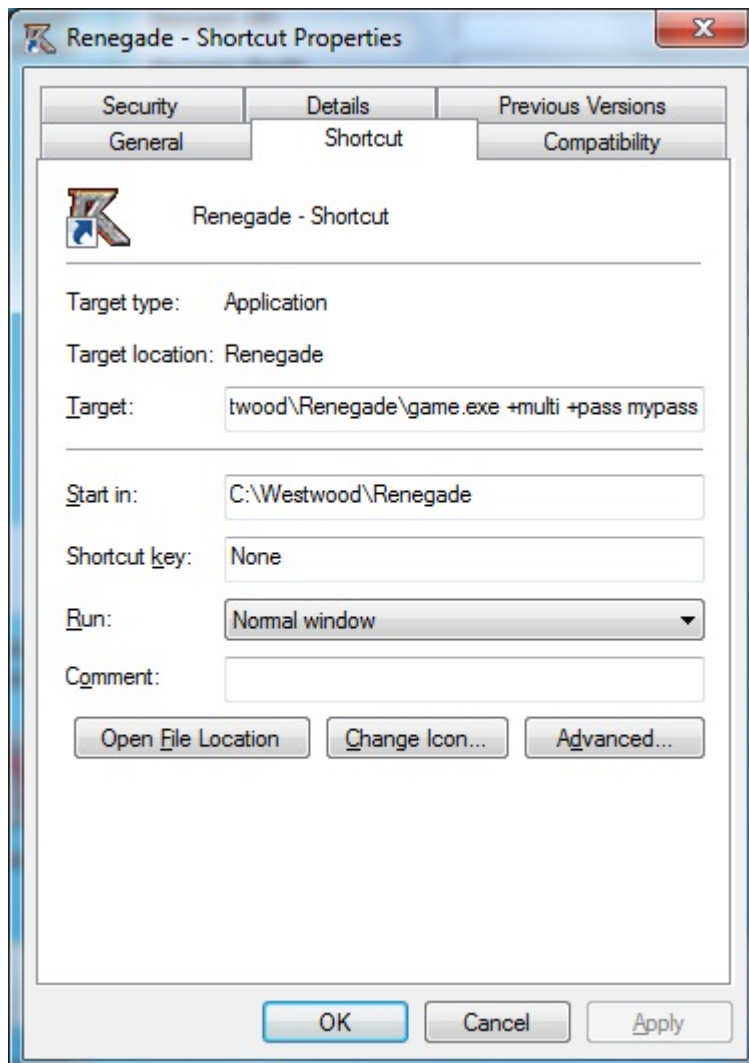
C:\Westwood\Renegade\game.exe +connect 127.0.0.1:4848 +NetPlayerName YourNickname  
+multi +pass passwordtoserver

You can make a shortcut if you want

#### File Attachments

---

1) [shortcut.jpg](#), downloaded 1113 times



---

Subject: Re: Fds a little help.

Posted by [Steven C.](#) on Sat, 16 Jul 2011 01:36:20 GMT

[View Forum Message](#) <> [Reply to Message](#)

---

Ok i cant find my server on the gamespy 3d list. Because of what said earlier.

But can you help check. It should be Local Area Connection Server  
I have not got a chance to change the name. The server ip is:

Ip: 192.168.0.8 Port: 4848 I cant get brenbot to work. And check if cloudyserv is on. Peace and try out playing a little on my server. but can you also give me tips and downloads to help me get started. PS: Nice. If i ever asked something like that on jelly. I WOULD OF GOT HATED. Thanks for the nice feedback

Edit: It's dedicated server or unnamed on list. I dont know!

---